



The Geography of Manhattan and New York.

Green Map System

August 2011, Local Spokes Presentation

Aaron Miller

Manahatta Project or Welikia Project, NYC in 1609





Manhattan

East River

Hudson River

Site of
future
East
Village

Upper New York Bay



Extent of
Manhattan
island today,
landfill

Landfill

Fish Species of the East River

Mammals

Birds

Reptiles

Amphibians

Fish

Plants

Common Name

Scientific Name

Probability

Crevalle Jack

Caranx hippos



Atlantic Silverside

Menidia menidia



Atlantic Tomcod

Microgadus tomcod



Ninespine Stickleback

Pungitius pungitius



Porgy (Scup)

Stenotomus chrysops



Atlantic Needlefish

Strongylura marina



Red Hake

Urophycis chuss



Fourspot Flounder

Hippoglossina oblonga



Atlantic Rainbow Smelt

Osmerus mordax



Winter Flounder

Pseudopleuronectes americanus



Atlantic Sturgeon

Acipenser oxyrinchus



Hickory Shad

Alosa mediocris



Alewife

Alosa pseudoharengus



American Shad

Alosa sapidissima



Fourspine Stickleback

Apeltes quadracus



Conger Eel or American Conger

Conger oceanicus



Weakfish

Cynoscion regalis



Atlantic Cod

Gadus morhua



Lined Seahorse

Hippocampus erectus



Spot Croaker

Leiostomus xanthurus



Little Skate

Leucoraja erinacea



Striped Bass

Morone saxatilis



Striped Mullet

Mugil cephalus



White Mullet

Mugil curema



Longhorn Sculpin

Myoxocephalus octodecemspinosus



Striped Cusk-eel

Ophidion marginatum



Summer Flounder

Paralichthys dentatus



Sea Lamprey

Petromyzon marinus



Rock Gunnel

Pholis gunnellus



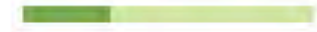
Windowpane

Scophthalmus aquosus



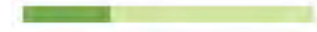
Northern Puffer

Sphaeroides maculatus



Spiny Dogfish or Piked Dogfish

Squalus acanthias



Hogchoker

Trinectes maculatus



Oyster Toadfish

Opsanus tau



Black Sea Bass

Centropristis striata

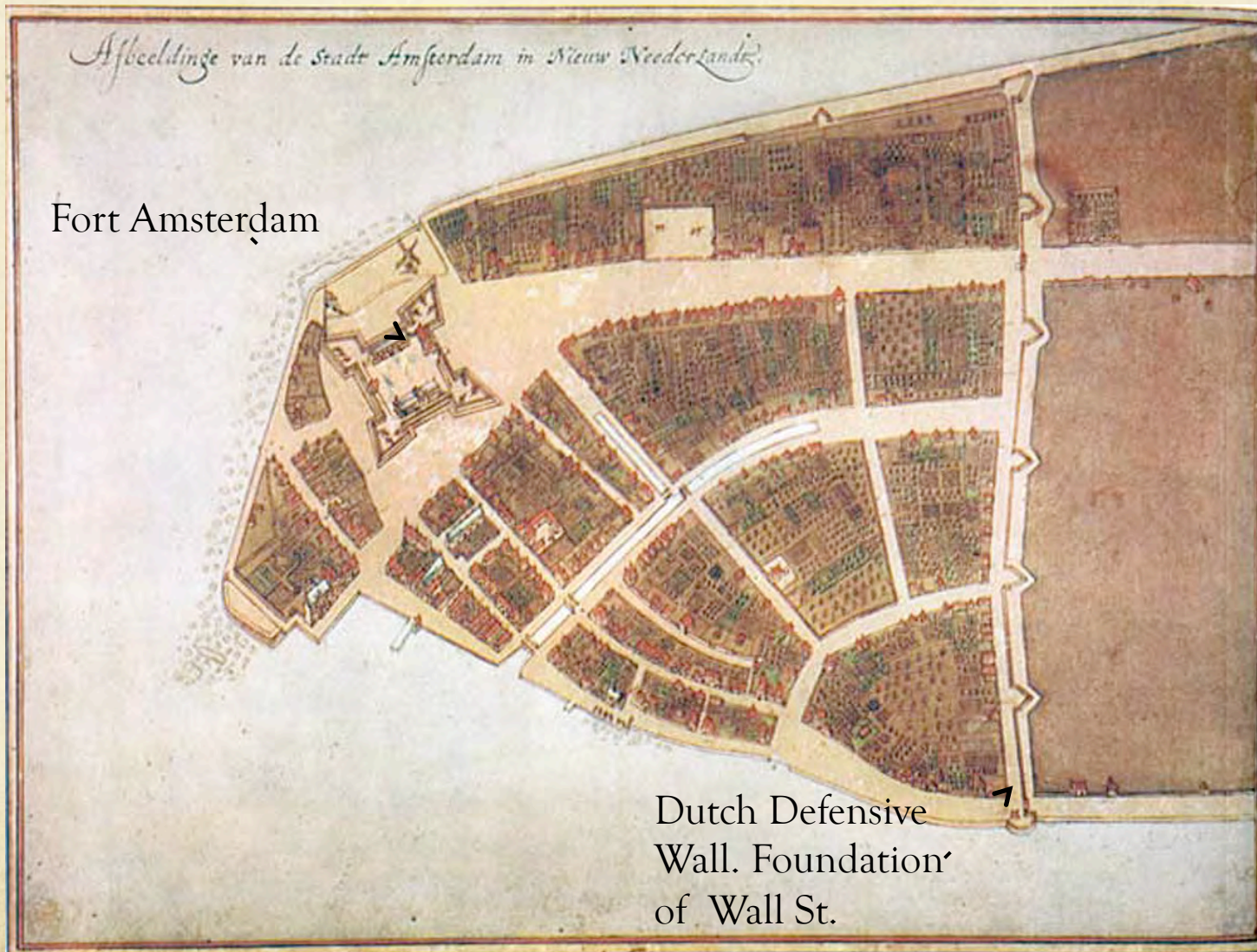


Threespine Stickleback

Gasterosteus aculeatus



Castello Plan, New Amsterdam in 1660



New York City in 1674



French Spy Map of New York City Published 1764



John Randel Map 1811



<http://www.nytimes.com/interactive/2011/03/21/nyregion/map-of-how-manhattan-grid-grew.html>



Reset



1836 Map of Manhattan's farms







Reset



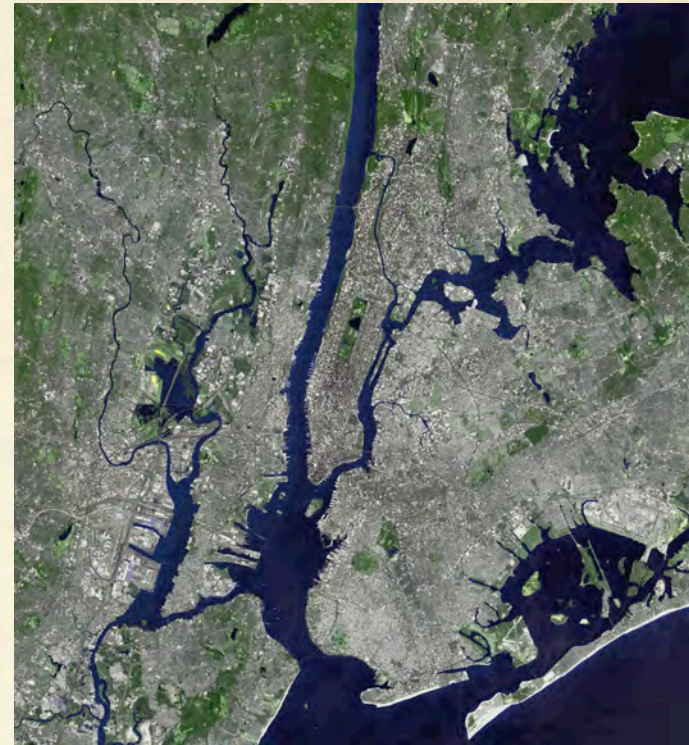
Tompkins Square



New York City Today

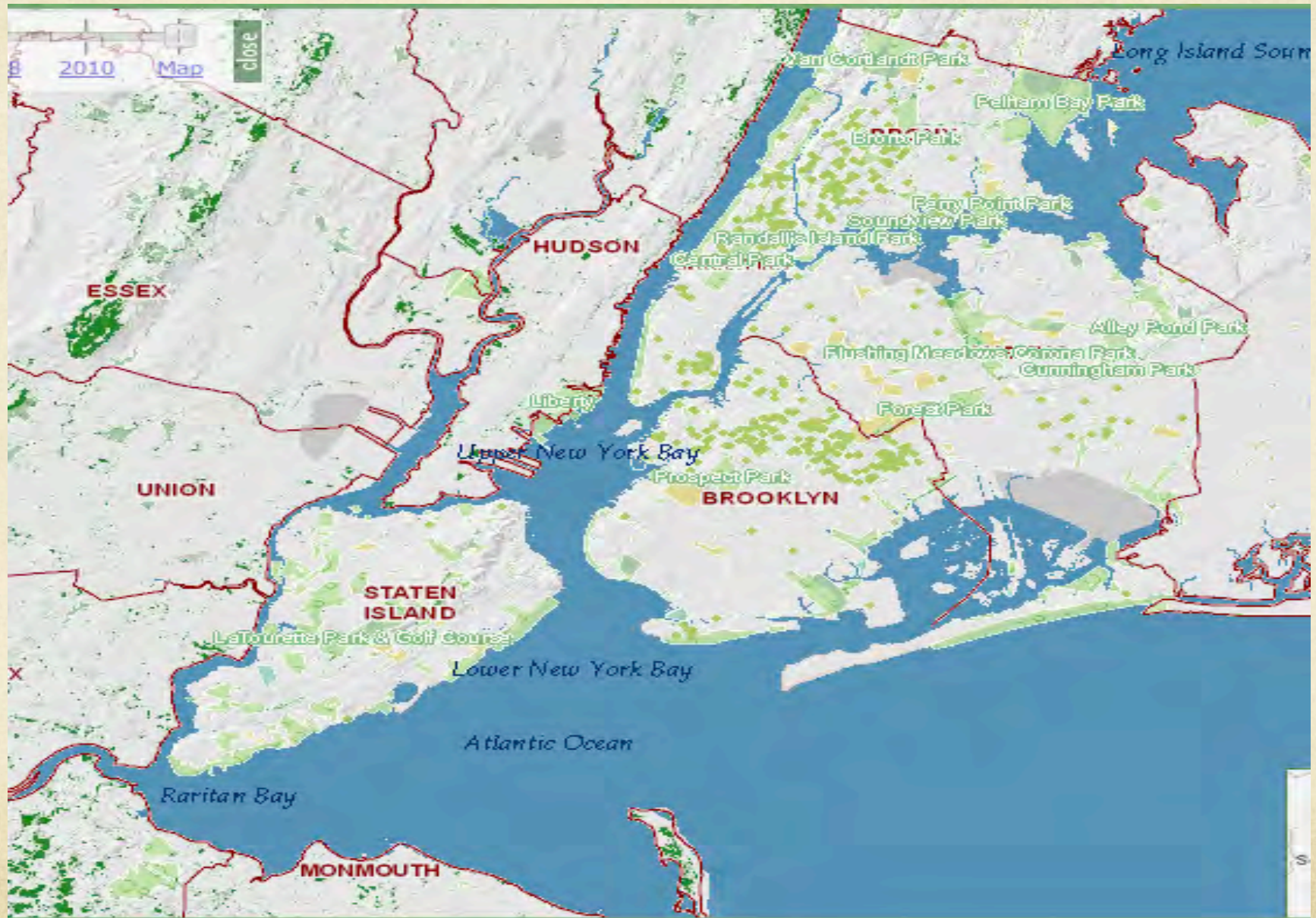


NYC at night, seen from space shuttle.

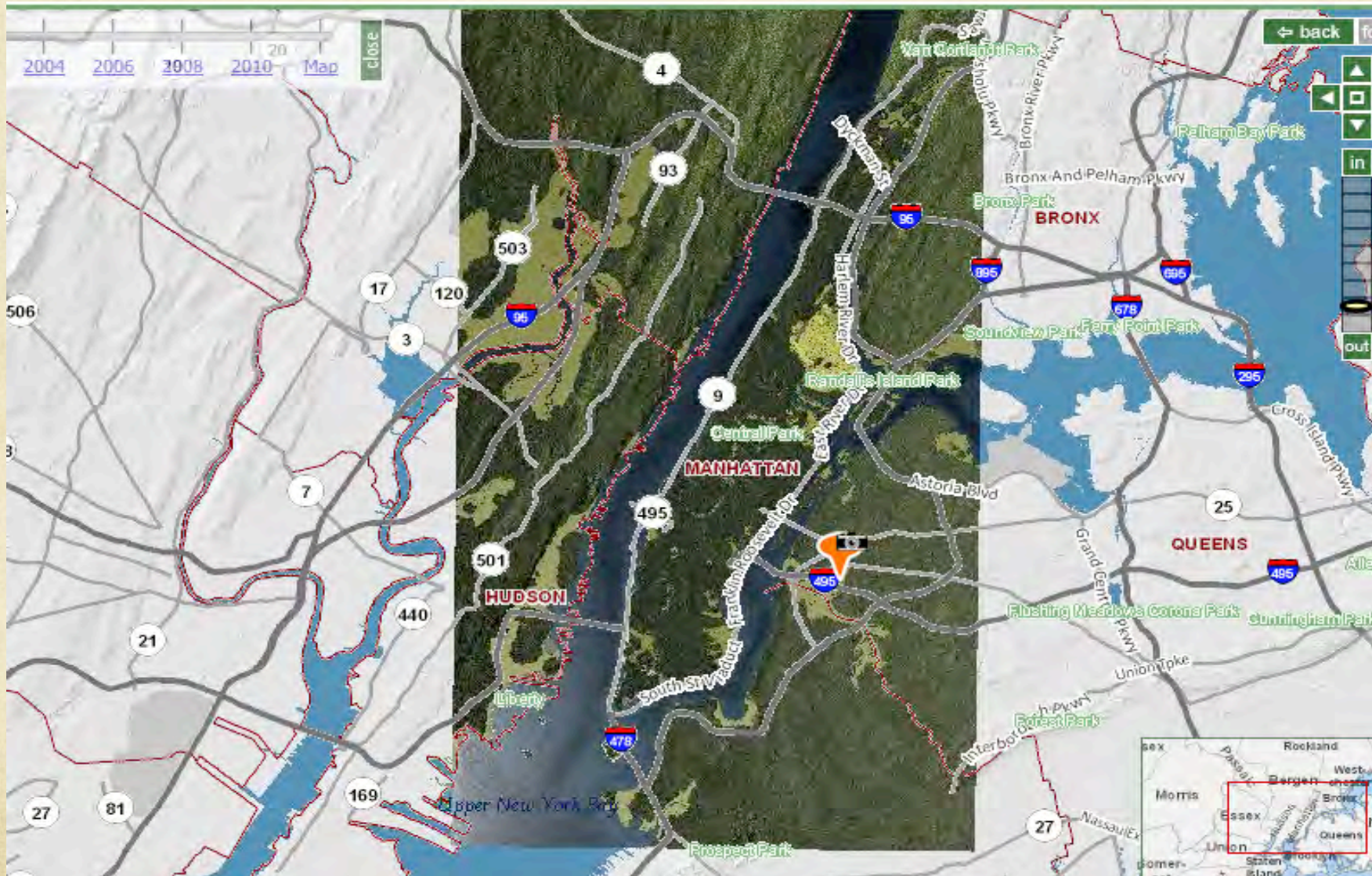


NYC from Space

Oasis Map



Oasis map 1609, with modern road overlay



These historic maps were presented at a **Local Spokes Youth Ambassador** program. **Green Map System** is one the nine groups involved in this bicycling coalition.



Mapping a sustainable and environmentally conscience NYC



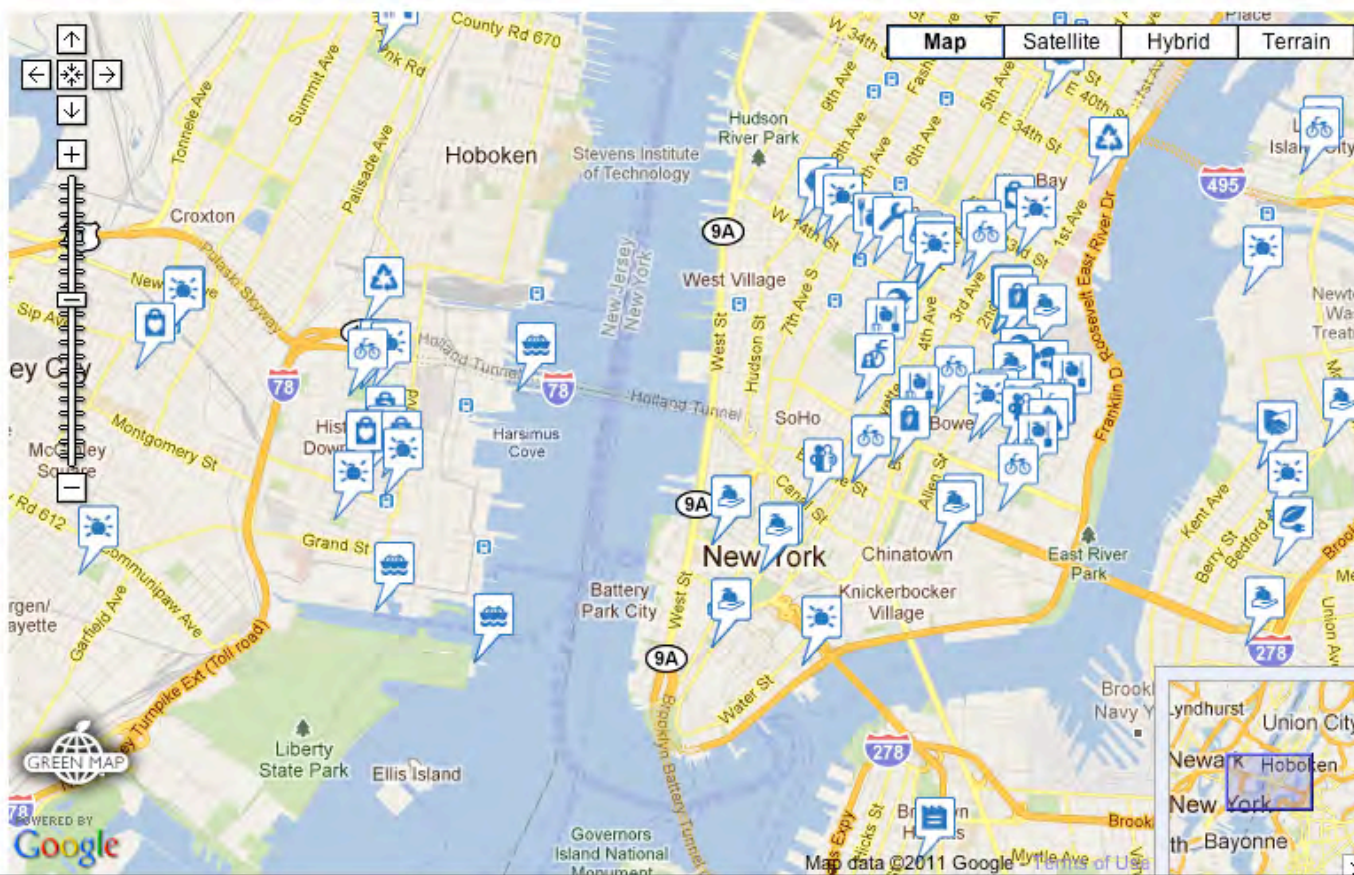
Open Green Map, Green Economy and Mobility



Open Green Map

Home >

World View Suggest a Site

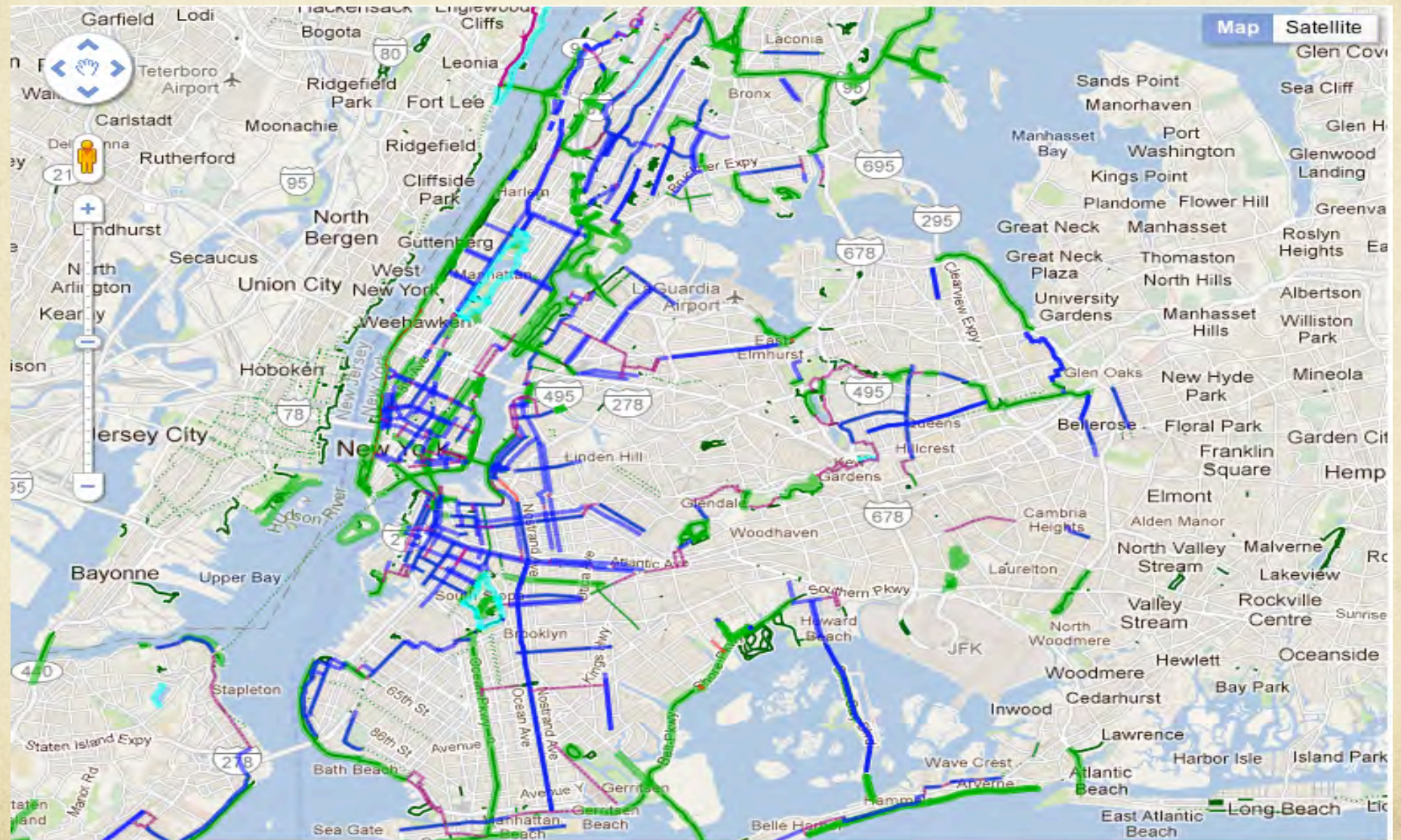


Legend Info Search

Green Map Icons

- ▼ Sustainable Living
- ▼ Green Economy
- ▼ Technology and Design
- ▼ Mobility

Bike Paths



Keep New York Green !



○ Thank you, Local Spokes and Green Map System!

References

- "The Welikia Project » Welikia Map." The Welikia Project . Wildlife Conservation Society, n.d. Web. 9 Aug. 2011. <http://welikia.org/explore/mannahatta-map/>
- "Afbeelding van de Stadt Amsterdam in Nieuw Neederlant - ID: 54682 - NYPL Digital Gallery." *NYPL Digital Gallery | Home*. N.p., n.d. Web. 9 Aug. 2011. <<http://digitalgallery.nypl.org/nypldigital/dgkeysearchdetail.cfm?trg=1&strucID=118555&imageID=54682&total=1&e=W>>.
- (Hugo Allard (d.1691): "Totius Neobelgii Nova et Accuratissima Tabula" (Detail), Amsterdam c.1674 This inset map of Allards "Totius Neobelgii Nova et Accuratissima Tabula"
- WHITE, JEREMY, MATTHEW ERICSON, FORD FESSENDEN, MICAH COHEN, JOE BURGESS, and ARCHIE TSE. "Map of How Manhattan's Grid Grew - Interactive Map - NYTimes.com." *The New York Times - Breaking News, World News & Multimedia*. N.p., 20 Mar. 2011. Web. 9 Aug. 2011. <http://www.nytimes.com/interactive/2011/03/21/nyregion/map-of-how-manhattan-grid-grew.html>.
- " OASIS Map." *NYC Open Accessible Space Information System (OASIS)*. N.p., n.d. Web. 9 Aug. 2011. <<http://www.oasisnyc.net/map.aspx>>.

