

Green Map System Overview

The Towson University Student Green Map was developed as part of the Green Map System, a global mapping network system used to chart local eco-cultural resources. With the implementation of a universal icon system, the Green Map System has been used in the creation of over 400 maps in over 50 countries. The mission of the Green Map System is to promote sustainability and participation on a local and national level.



Map Credits:
 Created and Designed by Caren Lipman, Mario Iati, and Mallory Varvaris. Created as part of ART 370 Special Topics in Art: The Green Map Project, a Spring 2009 Towson University course taught by Jessica Ring. Special thanks to Janet Felsten, Jessica Ring and everyone else for providing their time, effort, and teachings to make this student map possible. Published April 2009.
 Icons © Green Map System, Inc. 2008. All rights reserved. Green Map® is a Registered trademark and used with permission. <http://www.greenmap.org/>
 This map was created in collaboration with Baltimore Green Map. For more information and the interactive Baltimore Regional Green Map, visit www.baltoogreenmap.org
 Picture Credits: Desiree Stever, Kanji Takeno, Erica Gresham

About this Map

This Towson University Student Green Map serves as a guide for student involvement in sustainable living practices on Towson's campus. The map focuses on educating students about the various programs, activities, and initiatives Towson has to offer as a growing green school. We hope this map is helpful in bringing attention to the variety of green resources available to Towson University's students.



Did you know? Fun Facts

- Compact fluorescent light bulbs uses 75% less energy than regular incandescent light bulbs.
- Recycling just one aluminum can saves enough energy to operate a TV for 3 hours.
- Pizza boxes containing grease are just one of the many things that can be recycled through the RecycleALL program on campus.
- Americans throw away enough office and writing paper annually to build a wall 12 feet high stretching from Los Angeles to New York City.
- If every student unplugged their electronic devices and chargers when not in use, over 3 million pounds of carbon dioxide will be prevented from entering the atmosphere by the end of the school year.



C'MON TIGERS! GET INVOLVED

Explore the variety of ways you can make a difference on campus by becoming involved in Towson University's green practices. Use this map to find sites on Towson's campus that promote sustainable living practices, natural resources and cultural involvement.

Get Involved! Green Clubs & Organizations

- Students for Environmental Awareness:** develops and participates in local clean-ups, recycling initiatives, promoting the presence of organic foods in campus dining halls, and other green campaigns on campus. <http://www.new.towson.edu/SEAW/>
- Towson Campus Greens:** a group of progressive students working to change attitudes towards gender equality on campus, local labor concerns, voter registration and environmental issues. <http://www.new.towson.edu/campusgreens/>
- Video Activism Organization:** fosters and promotes awareness of video activism, using video for advocacy and as a tool for social change. <http://groups.myspace.com/videoactivist>
- Towson Energy Activists/Conservationists:** dedicated to eliminating Towson University's contribution to global warming and making the campus a model for sustainability to the rest of society. <http://teacc.blogspot.com/>



See Towson's Involvement Towson's Green Programs

- Recyclemania:** a recycling and waste minimization competition held among more than 500 colleges and universities across the United States.
- Reusable Mug Program:** enables students, faculty and staff to receive a discount on all drinks purchased in a 20oz. insulated Go Green mug.
- RecycleAll:** single stream recycling program allows any standard recyclable to be thrown into any campus recycling container.
- Adapt-A-Campus:** started in 2006 to remove litter and debris from high-traffic areas of campus.
- Trayless Tuesdays:** the Glen Marketplace and Newell Dining Hall go trayless every Tuesday to reduce food waste, decrease the energy and water used to clean trays, and encourage healthier eating habits.
- Earth Day PLUS:** a week-long series of events promoting environmental awareness was held surrounding Earth Day 2008.
- Go Green Orientation:** freshman orientation weekend includes a Go Green program in which students take a "green tour" of campus.
- Healthy food choices icon system:** a marked icon system to follow in order to help you while making health related food decisions.
- Reduce/Reuse Program:** students place unwanted furniture, clothing, computers and non-perishables into boxes placed in residence halls during move-in/move-out periods.
- Project Green Thumb:** promotes sustainability in dining facilities, including recycling and energy reduction.
- Project Green Plate:** dedicated to reducing waste in dining facilities.
- Monthly nutrigram:** a newsletter distributed in dining halls to advertise healthy eating habits.

Recycle, Reduce, Reuse Recycling Locations on Campus

- RecycleALL:** Towson's RecycleALL containers accept nearly any recyclables. There are more than 3,300 recycling containers on Towson University's campus. The general locations of campus recycling containers are:
- Lobbies & offices of academic and administrative buildings
 - Entrances to dining halls
 - Trash chute rooms of residence halls
 - Stair-well entrances to parking garages
 - Campus exteriors, near trash cans
 - All Sporting Facilities
- What you can recycle:** Plastic containers, bottles, bags, glass containers, aluminum containers, foil, paper, brown bags, coffee cups, newspapers, magazines, books, cardboard boxes, pizza boxes
- Battery Recycling:** Administration Building Payroll Service Counter, Administration Building Procurement Department, Smith Hall hallway, Smith Hall Physics Electronics Shop, Smith Hall Biology Stockroom
- Printer Cartridge and Cell Phone Recycling:** Each item recycled in the program gives the university points that are used to purchase equipment for the Child Care Center. To recycle a cell phone, simply drop it off at Cook Library rm 12.
- Central Recycling:** Towson University has formed a central recycling drop-off location for commuter students, faculty and staff in lot 14 to quickly and easily drop off any large quantities of recyclables.

Get Out There! Towson Outdoor Activities

- Glen Woods:** There is an outdoor ropes course located in the heart of the Glen Woods accessible to students. Many groups participate in this challenge course, Groups can work on team building skills, communication, creative problem solving skills, self-esteem development, group dynamics and decision making, leadership development while in an experiential education setting. Hiking trails make it easy to explore the woods and relax in a natural setting.
- Intramural Sports & Sports Clubs:** Intramural sports and sports clubs provide opportunities for students to participate in college sports. There are hundreds of these sports ranging from Badminton to Ultimate Frisbee to Wrestling.
- Towson Center & Stadium:** In the Towson Center and Stadium areas there are several outdoor activities open to students such as tennis courts, track, and open fields.
- Adventure Pursuits:**
 - Challenge Course
 - Peregrine's Nest Indoor Climbing Gym and Bouldering Wall
 - Outdoor Equipment Rental
 - Outdoor Trips
 - Educational Clinics
 - Project Marj Wilderness Orientation
 - Baltimore Rampage Climbing Competition



TU's Green Certified Buildings

- Administration Building:** Has high-performance, insulated windows that greatly improve its energy efficiency.
- Child Care Center:** Built with passive solar heating and summer shading, making extensive use of day lighting throughout the building while reducing the energy need related to heating and cooling.
- College of Liberal Arts:** First LEED certified building. Has a green roof
- West Village:** Features low-flow toilets and water efficient landscaping to reduce the building's water use.
- 7800 York Road:** Utilizes high performance, back-ventilated terra cotta exterior walls which provides increased insulation and reduces air infiltration into the building, eliminating mold and moisture and improving indoor air quality.



Transportation

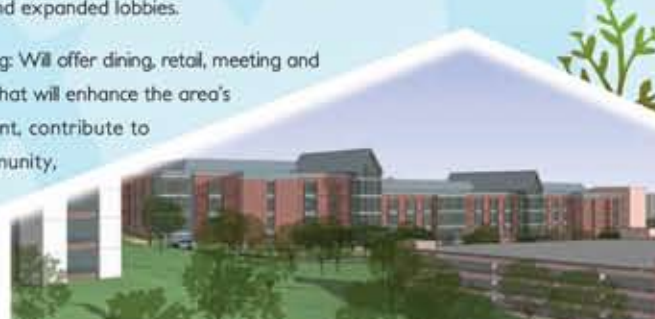
- Commuter Faculty/Staff and Students:** Any commuter student who drives a hybrid vehicle, will get half off the price of a regular parking permit.
- Black and Gold Route:** Towson University runs several free on-campus shuttle routes for students, faculty, staff and guests around campus as well as to surrounding apartment complexes. The new "next bus" system alerts you when the bus is on its way.
- Collegetown Shuttle:** The Collegetown Shuttle brings 16 area colleges and universities together by providing a bus that allows students to travel to other colleges as well as the Inner Harbor.
- Bike Riding:** There are bike racks outside of every building on campus. Saves on gas and parking time.

Green Areas

- Power plant:** The on campus plant provides Towson with 98% of its own energy. It houses the campus heating and air conditioning systems, and supplies the steam for hot water, heating and air conditioning for 22 buildings.
- Glen Woods:** The Glen woods is home to the region's largest arboretum, containing 23 native species of trees, and has been used by the TU community as an outdoor learning environment for many years.
- Trees of Towson:** The walking tour includes 25 trees and takes approximately 30 minutes. Some of the trees on campus are as old as the University itself, while others predate the University's move to Towson.

Future Plans

- Green Buildings:** Towson recognizes the impact it's buildings have on energy use and has committed to reducing it where possible. In August 2007, President Caret announced his intention to pursue LEED certification for all new campus buildings. The College of Liberal Arts Building will be the first on campus to receive LEED silver Certification.
- Smart Growth:** The "smart growth" strategy within the campus master plan aims to preserve and recreate natural, green areas of campus. While implementing the plan, the university plans to convert over 20 acres of paved campus area to open green space, helping to offset the campus's carbon footprint.
- Upcoming additions and Buildings:** College of Liberal Arts, Phase I: Phase I of a 3 phase project will be completed by the Fall of 2009. This will be the university's first LEED silver certified building
- Towson Center Addition:** The addition will contain 5,000 seats, state-of-the-art video screens, entertainment suites/boxes and expanded lobbies.
- West Village Commons Building:** Will offer dining, retail, meeting and other student service spaces that will enhance the area's living and learning environment, contribute to the development of its community, and serve as a central gathering space for current and future residential students.



What is LEED certified?

The Leadership in Energy and Environmental Design (LEED) Green Building Rating System encourages and accelerates global adoption of sustainable green building and development practices through the creation and implementation of universally understood and accepted tools and performance criteria. <http://www.usgbc.org/>



Academic & Administration

- AD Administration Building F2**
 - Built Green Building
 - Dining Location
- AH Auburn House B1**
- BU Burdick Hall D6**
 - Indoor Swimming Pool
 - C.R.I.B Fitness Center
- CA Center for the Arts D4**
 - Cafe Re-Usable Mug Program
 - Multiple Art Galleries
 - Dance, Theatre & Music
 - Artists Studio
- CC Child Care Center B1**
 - Green Roof Building
- CK Cook Library G4**
 - Starbucks Dining
 - Fair Trade Coffee
- DH Dowell Health Center G5**
 - Make an appointment at the Health Center
- ES Enrollment Services B6**
- FH Field House A2**
- GE Glen Esk G5**
 - Make an appointment at the Counseling Center
- GS General Services D6**
- HH Hawkins Hall E5**
 - Re-Usable Mug Program
 - Brick Street Cafe
 - Dining Location
- LA Liberal Arts Center F5**
 - Green Roof Building
 - Built Green Building
 - Re-Built from 98% of Lida Lee Tall remains
 - First of Towson's LEED Certified Buildings
- LH Lecture Hall F5**
- LI Linthicum Hall F5**
- LS Landscape Services A2**
- MC Media Center F4**
- PP Power Plant G5**
 - 98% of TU's energy
- PY Psychology Building F5**
- SA Stephens Annex G4**
- SM Smith Hall F4**
 - Observatory
 - Greenhouse
- ST Stephens Hall G4**
- TC Towson Center A2**
- TD Terrace Dale (Leased) G2**
- UU University Union E5**
 - Sells Local Food
 - Healthy Dining Locations
 - Organic/ Local Food
 - Fair Trade Coffee
 - Re-Usable Mug Program
 - Energy Conserve Practices
 - Fish Pond
 - Surrounding Gardens
 - Fish
 - PAWS Diner
 - Local Bands Perform
- VB Van Bokkelen Hall F4**
- YR 7800 York Road G2**
 - Built Green Building
 - Cafe

Dining

- AD Administration Building F2**
 - 7720 Cafe
- CA Center for the Arts D4**
 - Arts Cafe
 - Fair Trade Coffee
 - Re-Usable mug program
- CK Cook Library G4**
 - Starbucks
 - Fair Trade Coffee
- GD Glen Dining Hall E4**
 - Sells Local Food
 - Healthy Dining Location
- HH Hawkins Hall E5**
 - Brick Street Cafe
- ND Newell Dining G5**
 - Healthy Dining Location
 - Organic/ Local Food
 - Fair Trade Coffee
- Re-Usable Mug Program**
- Organic/ Local Food**
- Fair Trade Coffee**
- Energy Conserve Practices**
- Newell Den**
- TR Towson Run Apartments A6**
 - Fresh TRAX
- UU University Union E5**
 - Paws Cafe
 - Patuxent Bistro
 - Susquehanna Food Court

Residence

- BK Berkshire Apartments H6**
- Glen Complex E4**
 - AT Glen complex (A)
 - BT Glen complex (B)
 - CT Glen complex (C)
 - DT Glen complex (D)
- MH Millennium Hall B5**
- NH Newell Hall G4**
- PH Paca House B6**
 - Built Green Building
 - Green Certified Building
- PR Prettyman Hall G5**
- RT Residence Tower F6**
- RI Richmond Hall G4**
- SC Scarborough Hall H5**
- TH Tubman House B6**
 - Built Green Building
 - Green Certified Building
- TR Towson Run A6 Apartments**
 - Dining Location
- WA Ward Hall G6**
- WE West Hall G6**

Sports

- SB Softball A2**
 - Softball Diamond
- US Johnny Unitas Stadium A2**
 - Football Stadium
- SC Soccer A3**
 - Soccer Field
- SP Shuerholz Park C6**
 - Baseball Diamond
- RC Ropes Course F3**
 - Ropes Training Course
- TE Tennis A1**
 - Tennis Courts

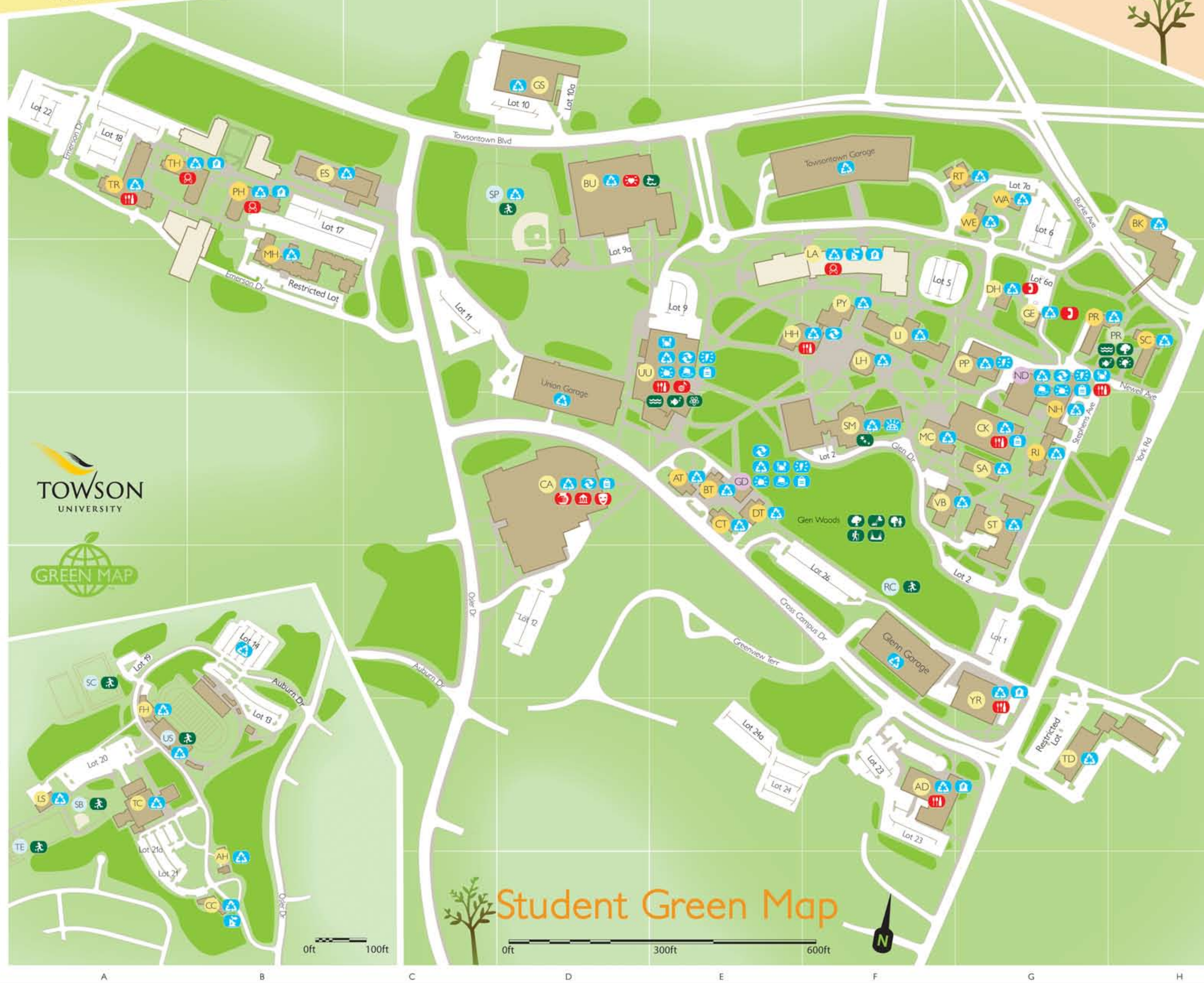
Green Areas and Preserved Land

- Glen Woods F4**
 - Natural tree and plant growth
 - Variety of different local trees
 - Variety of local wildlife
 - Bonfire pit
- Natural Corridor**
- Walking paths and trails**
- The beach green study area**
- PR Prettyman Hall H5**
 - Special Preserved Trees
 - Fish pond

Other Areas

- Recycling (All Buildings)**
- Under Construction**

By using the Towson University Student Green Map, students will become informed about Towson University's green involvement and will see Towson's accomplishments in becoming a green campus.



Student Green Map

Green Map Icons

- Energy Conserve
- Green Building
- Green Store
- Local Market
- Greenhouse
- Reuse
- Garden
- Habitat
- Park/ Rec Area
- Special Tree
- Star Gazing
- Water Feature
- Art Studio
- Dining or Pub
- Lively Spot
- Museums
- Fair Trade
- Green Roof
- Healthy Dining
- Organic/ Local Food
- Recycle
- Eco Tour
- Greenway
- Natural Area
- Re-built Site
- Sport Site
- Swimming
- Water Habitat
- Appt Needed
- Eco Certified
- Local Music
- Theatre

Sustainable Living

Nature

Culture & Society