

Jersey City
Montclair

Putting Sustainable Jersey on the Green Map



Hillsborough Discovery Trail

Sustainable Princeton & Colleagues 3-12

Hillsborough, Montgomery, Princeton and
Living Green Teams took part, along with
several people from Lawrence Twp

Spring 2011 - Spring 2012

This event is sponsored by
Sustainable Lawrence and Lawrence Twp. Green Team

Discussion and networking
rounded out the event

Table of Content


A Better Tomorrow, **SUSTAINABLE JERSEY** One Community At A Time

CERTIFIED

ABOUT US WHAT WE FUND APPLY WORKSHOPS STORIES DODGE POETRY

The Geraldine R
DODGE
FOUNDATION

IMAGINE A BETTER NEW JERSEY

OPEN GREEN MAP  LOCAL GREEN MAPS

[illegible]

[GRDodge.org Blog](#) by Donna Drewes
of Sustainable Jersey.

Introducing Jersey City...



Sustainable Jersey Rating: **Certified**

Sustainable Jersey City

— A Collaborative Network —

Contact Person:

Ashwani Vasishth Vasishth@ramapo.edu 323-206-1858

Debra Italiano debitaliano@gmail.com 917-447-9839

Profile

Open Green Maps

Website:

GreenMap.org/jerseycity

SustainableJC.org

OpenGreenMap.org/jersey-city-big-dig

Maps in Progress:

Community Composting

Bike JC

Rain Garden Campaign

Green Complete Streets

Good Food Now ! - Food Assets Map

Description of JC Green Map:

There's more going on in Jersey City than meets the eye. There is an active and dynamic community effort underway to make JC greener. The purpose of this map is to capture that community knowledge, the projects and programs of all the various stakeholders across the city, and to help tell the really rich narrative of JC on this Green Map, both historically and for understanding our city in real-time so we can plan for our future. Another purpose of this map making enterprise is to use Green Map as a community building tool to encourage partnerships and neighborhood collaborations; also, we envision it as a way to bring municipal officials and community members together for planning discussions on sustainability initiatives throughout the city.

These community groups, stakeholders, government agencies, schools, etc. are contributing to our Green Map:



Here's how we are letting members of our community know about our Green Map project, and what's going on



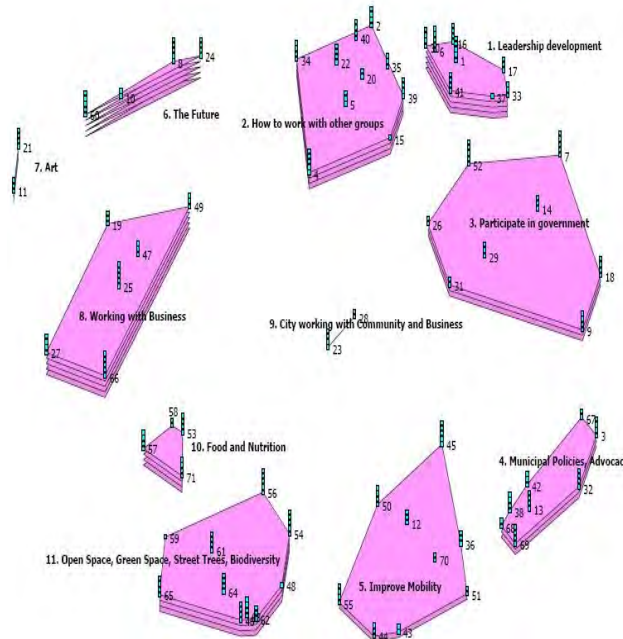
Sustainable Jersey City Monthly Small Work Group Team Organizing Meeting!

Each month Sustainable JC comes together to learn about and support community projects. The format of the meeting often includes a brief talk on a topic of interest, an update on new tools and resources we are bringing to our growing network of Small Work Group Teams (SWGTs) that have formed. Folks come early (6:30pm) and stay late (9pm) if they want to network; program kicks off at 7pm and ends around 8:30pm. Monthly meetings take place at HCCC Culinary Conference Center.



Check out our MeetUp Page!

<http://www.meetup.com/Sustainable-Jersey-City/>



11-Cluster Point Rating Map: Importance

Bright St. Community Garden;
Permaculture Design Site

Sustainable JC

Collaborative Model !!

Developer, Residents, Bright St.
Academy, Restaurants, Artists and
Gardeners – who else wants in ???



Urban Ag is Coming Alive in JC !

*Each Town is Unique...
Here's an example of a site on our map!*



Jersey City NJ

Jersey City United States

View Map

About

Join Map Team

Suggest a site

Liberty Humane Society



Overview

Comments (1)

Connections

Multimedia

Impacts

For years the Liberty Humane Society has given homeless cats and dogs a chance to be adopted into loving homes. In a partnership with the City of Jersey City, under the auspices of the Mayor and City Council, the LHS took over management of the Jersey City Animal Shelter. We are working with the city to raise funds to build a state-of-the-art facility. The Liberty Humane Society has partnered with the City of Jersey City to build a new, state-of-the-art animal shelter on city-owned land located in Liberty State Park. The current facility is a converted garage, sorely in need of renovation and expansion.

lhs@libertyhumane.org
<http://www.libertyhumane.org/>

Jersey City NJ
updated 03/2012 by Jersey City NJ

Jersey City



No votes yet

1 comment

share this site



Legend

Info

Search

Green Map Icons



- ▶ Sustainable Living ☒
- ▶ Nature ☒
- ▶ Culture and Society ☒

Routes and Areas

- ▶ Routes ☒
- ▶ Areas ☒

DONATE

POWERED BY
Google

Our Activities and Charter

Sustainable Jersey City

— A Collaborative Network —

Sustainable JC Charter

<http://www.sustainablejc.org/charter>

SOME OF OUR ACTIVITIES

Sustainable JC Org Dev Projects

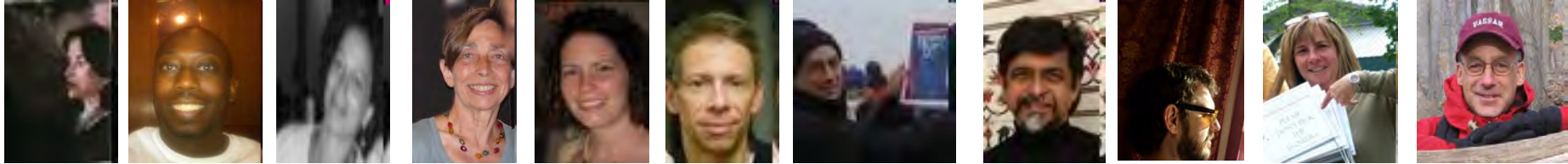
Participatory Planning Advocacy
Policy / SJC Charter
SJC Organizing Committee (Advisory Board)
College Students/ Neighborhood Ambassadors
Community Outreach
CSC / Educational Workshops
Events Planning
PR & Social Media
Grant Writing
Sponsorships
Strategic Partnerships
Website / Tech Support
Assessment / Evaluation

Neighborhood Projects

JC Green Map
Green Trade School (PDC, LEED)
Skills Sharing/ Panels / Film Events
Recycling / Trash & Materials Re-Use
Community Composting
Good Food Now !!
Rain Garden Campaign / GI
Green Complete Streets
Social Enterprise / Business Ops
Public Art Installations
Energy Efficiency & Water Conservation



People and Projects



[Washington Park
Permaculture
Learning Garden](#)

[Hudson
Reporter
Article](#)



Our SJC Monthly Small Work Group Team Meetings are lively, with many different groups and sometimes, other cities taking part.

[View Robb Kushner's](#)

[Jersey City - Spots of
Interest](#)



Richard Williams started this map in 2010 - it became a Sustainable JC project in 2011

Here are some of our future plans & where we see our project going

Sustainable Jersey City

A Collaborative Network

www.sustainablejc.org



Participatory planning is an urban planning paradigm that emphasizes involving the entire community in the strategic and management processes of urban planning.

We aspire for Jersey City to become a more partnered municipality where both Officials and other Community Stakeholders come together to make JC a more sustainable place to live and work.



We are committed toward building greater, more localized skills and knowledge in the areas of sustainable community development, thereby empowering groups and individuals to become more successful citizen actionaries on behalf of their own neighborhoods. Providing educational opportunities and nurturing broad civic participation will help us to achieve this.

We hope to inspire a wave of regenerative thinking and cultural change in preparation for and in response to some of the broader global challenges we face, which are frankly reaching our front doors here in Jersey City, i.e., fundamental concerns having to do with health, affordable access to food and water, home and neighborhood security, clean responsible energy programs and opportunities for our livelihoods to flourish alongside the local economies we contribute to and draw from.

Introducing Montclair...



Sustainable Jersey Rating: **Certified**
[Profile](#)

Open Green Map Website:
OpenGreenMap.org/greenmap/montclair-nj

Montclair Green Map Contacts:

Margaret E. Seip, AICP/PP

Consultant, Community Planning & Development

pegseip@comcast.net

Gray Russell, Environmental Affairs Coordinator

Township of Montclair

grussell@montclairnjusa.org

Naeema Campbell, Grants Assistant

Partners for Health

ncampbell@partnersfdh.org

Description of Green Map:

The Montclair Green Map is an effort to identify and map the many environmental assets of the town including local parks, accessible public transit, walkable business districts, and locally grown produce access points and engage community members in identifying accessibility gaps or deficiencies.



Project Description

Green Map Montclair is a collaborative project of:

- Montclair's Green Team and Department of Environmental Affairs;
- The Partners for Health Foundation's "Eat. Play. Live....Better" Initiative;
- Montclair Sustainability Together (MoST) a broad-based consortium of community members working toward sustainable health, environment, and economic solutions.

Green Map Montclair will:

- Create a base map of some of the town's environmental assets including local parks, accessible public transit, and community gardens;
- Engage the community in a broader discussion of "sustainability" to identify and map resources that support sustainable health, lifestyles, economic and cultural life.
- Build the shared understanding needed to create and preserve a sustainable future

Here's how we will inform and involve our community in the Green Map project!



Outreach to key constituents including seniors, youth, and activists involved in environmental, food systems, health and related efforts.

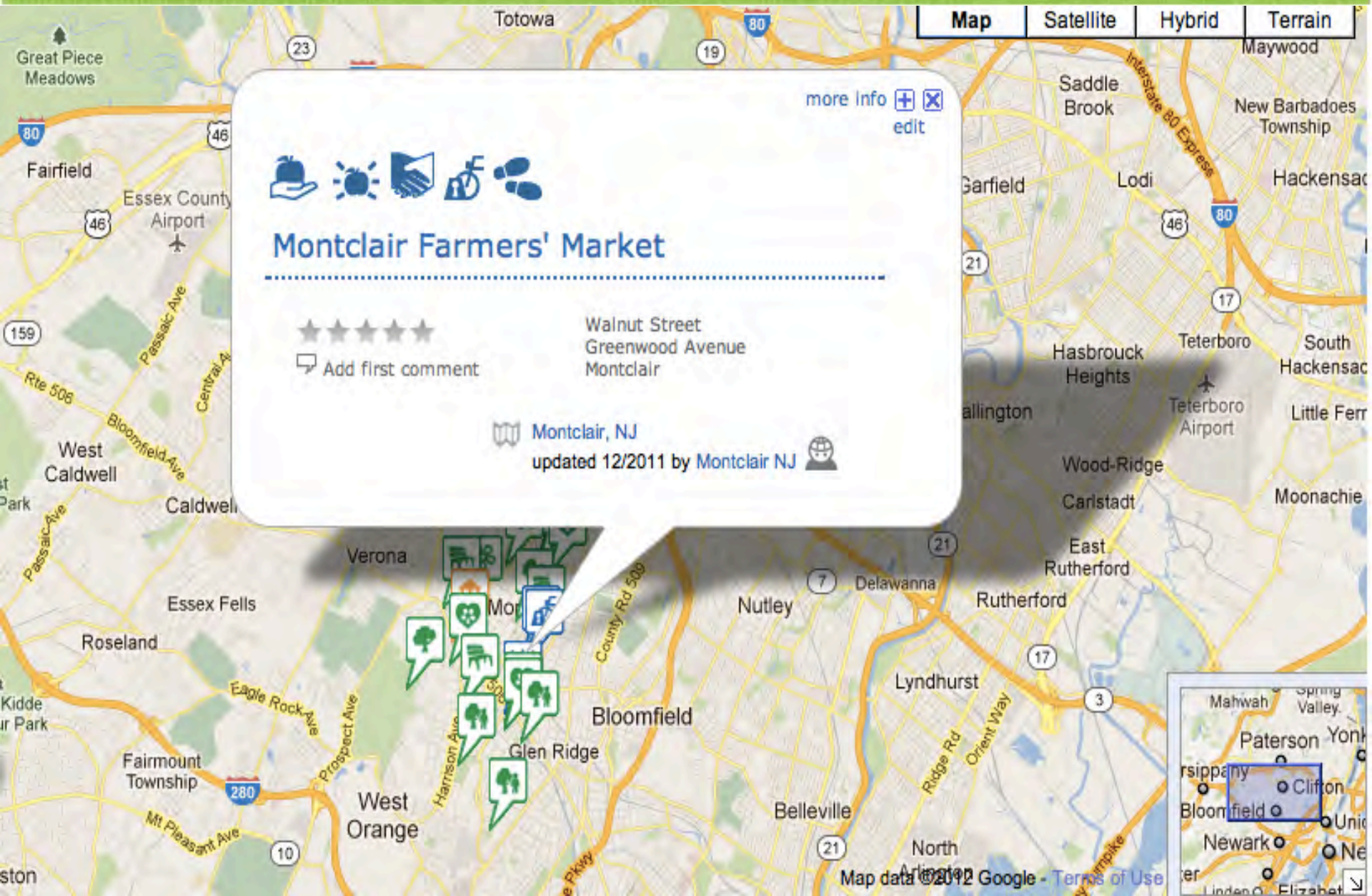
Education programs in local schools to teach about sustainability and the power of mapping and connect students to the long-term work of creating healthy environmental and economic lifestyles.

Information dissemination through the Montclair township website, the Eat, Play, Live....Better initiative, and other local forums.

Dialogue to raise awareness through township departments and political forums.

Perseverance over time to build awareness, understanding, and a shared responsibility to create and protect a sustainable future.

*Each Town is Unique...
Here's an example of a site on our map!*



Here are some of our future plans & where we see our project going

Document the location of all community gardens, safe routes for active Transportation, and township open spaces as useful destinations;

Increase access to healthy foods by identifying sites for future community gardens and ways to participate in organic food buying clubs, CSAs, and other sources.

Involve local students in this effort through classroom and school-based workshops.

Map food access sites such as soup kitchens, food pantries and other social service providers.

Conduct a series of local presentations and town meetings to broaden awareness and input.

Seek project funding to effectuate all of the above.

Introducing Haddonfield

Sustainable Jersey Rating:

Certified

Contact Person:

Nancy Ashton 609-652-4300

Nancy.Ashton@stockton.edu

[Profile](#)



Open Green Maps

www.opengreenmap.org/greenmap/south-jersey-greenmap

Description of Green Map:

We are a cluster of three municipalities, committed to the value of Green Maps for residents, visitors and activists. We see the value of Green Maps during the process of making them and in the resulting maps, in bringing people together, helping them navigate the environment based on needs, wants and what they can learn. Part of our project will lead to maps that can help people understand the links between areas of environmental destruction (landfills, incinerators, toxic dumps, sewage plant etc) which make it possible for other areas to stay green and environmentally protected. We want people to see this interdependency. It's also important to correct misimpressions of areas that people judge to be "bad", when those areas have green features and cultural thriving factors. We will have Green Maps of three towns in southern New Jersey: Camden City, Galloway, Haddonfield

Camden County – South Jersey Green Teams are working together



Since our project involves 3 municipalities,
we have three clusters of people, each organizing that map.

Barbara Fielder heads up a Galloway team;

Andrea Ferich leads a Camden team and

Nancy Ashton is in charge of the Haddonfield map.

We are involving students in our process

These community groups, stakeholders, government agencies, schools, etc. are contributing to our Green Map:



CAMDEN-

Northgate Park Native Plants Installation

www.northparknativeplants.com

- [Waterfront South](#)
- Bread-oven
- Green Roof
- Eve's Garden



*Each Town is Unique...
Here's an example of a site on our map!*



View Map


About

Join Map Team


Suggest a site

Map Satellite Hybrid Terrain

more info [+](#) [x](#)





**Atlantic County Utilities Authority
Demonstration Rain Garden**



★★★★★
[Add first comment](#)

6700 West Delilah Road
Egg Harbor Township

 The Everything Map
updated 03/2012 by [rutgers.water.resources.program](#) 

Imagery ©2012 TerraMetrics, Map data ©2012 Google - Terms of Use

Here are some of our future plans & where we see our project going.

1. In Haddonfield we will map the seen and below-ground route of Newton Creek
2. We'll add the planned bike path in Haddonfield
3. Once our Green Business Recognition program is in place, we'll map those businesses in Haddonfield which achieve that status
4. Other local sites as our plans evolve
5. Longer range goal is to get the whole county mapped---and each municipality.

Introducing Camden...



Sustainable Jersey Rating: In Process

Contact Person:

Andrea Ferich

aferich@gmail.com

856-283-1338

[Profile](#)

[Map Profile](#)



Open Green Maps

[Native Plant Corridor](#)

[Camden Food Assessment](#)

[South Jersey Greenmap](#)

[Statewide Food Assessment](#)

Website:

<http://camdencenterfortransformation.org/>

Description of Green Map:

We are mapping all the positive sites of Camden to analyze the continued roadmap for sustainability in Camden, NJ through youth-led community food assessments, local economy opportunities, and ecological education.

These community groups, stakeholders, government agencies, schools, etc. are contributing to our Green Map:



Camden's Neighborhood Leaders

Members of the Camden Community Development Association
Camden Green Team
Rutgers Water Resource Department
NJ Ag in the City
The Delaware River Keepers
New Jersey Conservation Foundation
Camden High School
Camden Partnership Catholic Schools
Various local universities

SOUTH JERSEY GREEN TEAMS

Sustainable Cherry Hill
Galloway Township
Stratford Green Team

We are using Facebook to let members of our community know about our Green Map project, and what's going on!



Camden Center for Environmental Transformation

Turn your blog into a customized app
Make a custom blog app you can share with others!

New York. It is a powerful and, at times, overwhelming experience. It is set in Wor...



Native Plant Corridor



The Native Plant Corridor Map: This is our project to map the corridors of native plants and beehives of the mid-atlantic region. Zone in or pan out to learn the specifics of each location. This project is through greenmap.org
<http://www.opengree...>



BIOBLITZ results

We had a great day on Oct. 31 for our first ever bioblitz in Waterfront South.

What's a bioblitz you may ask?

Scientists from the Academy of Natural Sciences including the zoo, and the Camden Aquarium Academy came with Camden residents to walk

Dedicated to environmental transformation and environmental justice particularly in the Waterfront South neighborhood of New Jersey

Board Member Interviews

Vision

Mission

Directors

Feedback

Contact Us



Eve's Garden

Share More info



Andrea Ferich

so excited for new programming elements this year including training youth to map and document the ways that they are transforming their communities, on a map much like this:



Delaware River Watershed Camden BEES | Open Green Map
www.opengreenmap.org

Like Comment Unfollow Post Share February 2 at 3:46pm near Camden

Elton Custis, Patrick Mulligan, Beverly Brown and 4 others like this.



Christoff Lindsey ... Andrea, you're the best !!! ... One Love ... shaloam ...
February 2 at 4:24pm - Like

Great panel discussion coming up in Mt. Airy with @philadelphia beekeepers guild, and the @philadelphia orchard project and the amazing work of graphic novelist Aaron Birk. details attached.



Transformation: Connecting with Honeybees (Pollinators Corridor Panel)
camdenfcet.blogspot.com

Like Comment Unfollow Post Share November 3, 2011 at 1:55pm near Camden

Linda Ferich and Dan Platt like this.

View all 3 comments

*Each Town is Unique...
Here's an example of a site on our map!*



Sumner Elementary School

1600 South 8th Street
Camden
NJ 08104



edit



Overview

Comments

Connections

Multimedia

Impacts

Two Rain Gardens at this location! One is located close to S 8th Street (Installed in 2010) and the other one is close to the building (Installed in 2011).

History:

The Sumner Elementary School rain gardens were installed to beautify the site and to intercept, treat, and infiltrate stormwater runoff from the roof of the school. The stormwater from the roof enters the rain gardens through redirected downspouts.

Two 2011 fourth grade classes, participated in the Stormwater Management in Your School Yard educational program that was designed to provide students with an opportunity to apply their science, math, and communication skills to real-world environmental problems through the building of a rain garden on the Sumner Elementary School's campus. The Stormwater Management in Your School Yard educational program focused on increasing the fourth grade students' environmental awareness in hope they will teach others in their communities about the importance of water quality and quantity. The students completed the nine



No votes yet

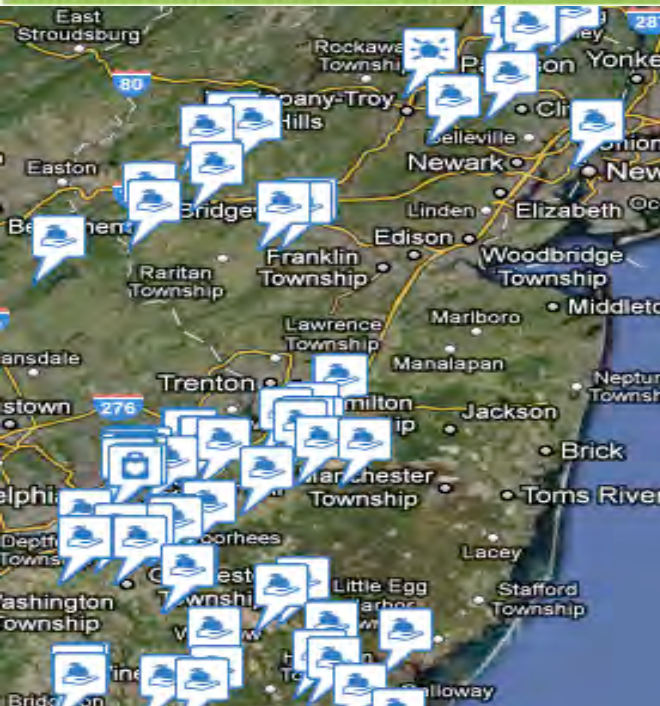
0 comments

share this site

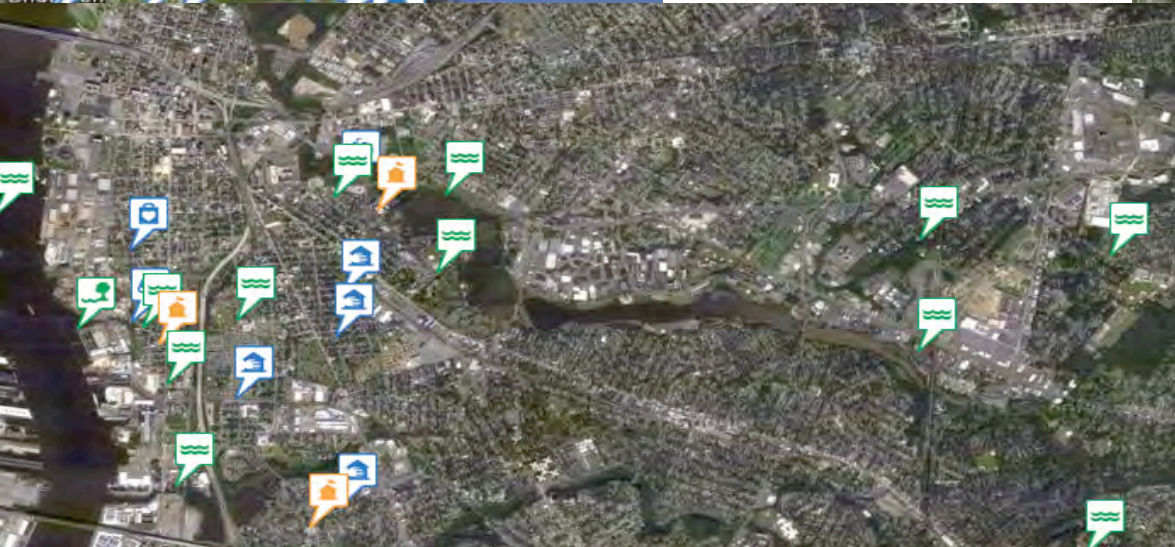
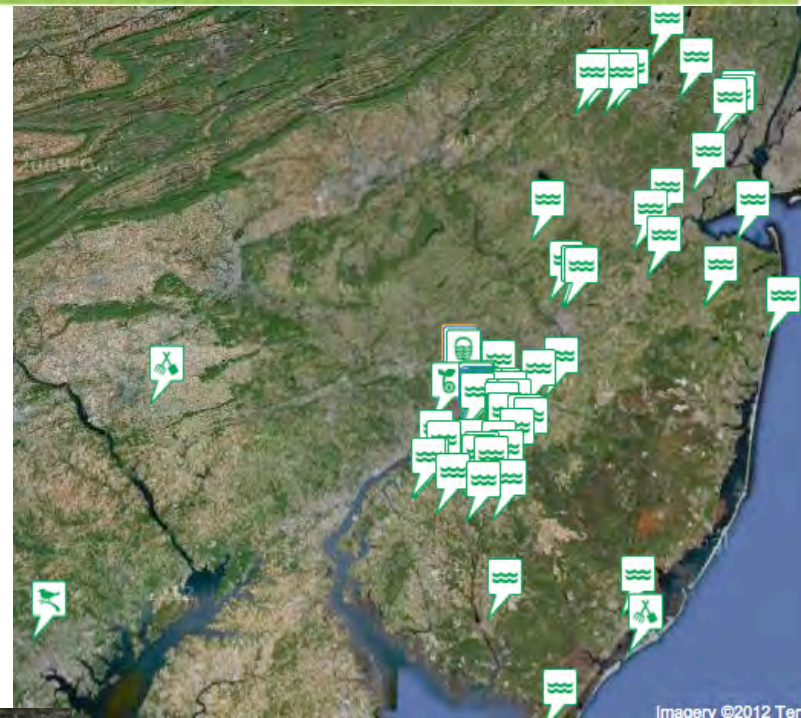
flag this



Here are some of our future plans & where we see our project going



The Camden Green Map will continue to expand across the South Jersey region. Here you can see our efforts at mapping the food system, assets, and green infrastructure initiatives across the region and state.



We will continue to partner with green teams to map the collaborative opportunities and sustainability initiatives around the region.

Partners & Contributors to our Green Maps!



South Jersey Greenmap
Nancy Ashton Cherry Hill
Barbara Fiedler Galloway
Andrea Ferich Camden
Tim McFalls Stratford

Native Plant Corridor
Rutgers Water Resource Department
Center For Environmental Transformation
Philadelphia Bee Keepers Guild
Janet Felsten

Delaware River Watershed
Camden High School
Delaware River Keepers
New Jersey Conservation Foundation

NJ Food System
Delaware Regional Planning Commission
Greensgrow
NJ Ag in the City
NJ Farm to School Network
Camden City Food Security Advisory Board

Introducing Galloway...



Sustainable Jersey Rating: **Certified Silver**

Contact Person:

Barbara Fiedler

bfiedler@gallowaytp-nj.gov

609-652-8657x10

[Profile](#)



Open Green Maps in Progress

Galloway Green Map ([Under construction](#))

Description of Green Map:

This map will be designed as a companion piece to our newly completed Environmental Resource Inventory.

We are partnering with Camden and Haddonfield as a team: Camden / South Jersey. Students from Richard Stockton College are working with all 3 teams.

These community groups, stakeholders, government agencies, schools, etc. are contributing to our Green Map:



- ***Go Green Galloway (A Task Force for a Sustainable Galloway)***
- ***Richard Stockton College Interns***
- ***Fair Trade Galloway***



Here's how we are letting members of our community know about our Green Map project, and what's going on!



Our Green Team tables at many events, and we discuss the Green Map project with attendees.



We plan to do a press release that we hope will draw members of the public to participate with suggestions for the site.

We do have a Facebook site that will soon have a Green Map “suggested site” area.

Since our Township website and our **Go Green Galloway** website are both under construction, this media opportunity is forthcoming.

*Each Town is Unique...
Here's an example of a site on our map!*



The Galloway Township Community Garden was created in 2008 and has been tremendously successful. The 24 regular beds and 6 handicap-accessible beds have been rented consistently each year.

This garden was made possible through funding from the Municipal Land Use Center of the College of New Jersey through the Geraldine R. Dodge Foundation. It is a pilot project that we hope will inspire our many homeowners associations to set aside land for their own community gardens.

New for 2012: A large bed was added for those renters to use who wish to grow for the Community FoodBank.



Here are some of our future plans & where we see our project going

We will continue to add sites to the map as Galloway Township continues to evolve into a more sustainable community.

Sites that will be included in the map are:

PASSIVE RECREATIONAL SITES

ENVIRONMENTAL DESTINATIONS

GREEN BUSINESSES

FAIR TRADE BUSINESSES

SUSTAINABLE LANDSCAPING PROPERTIES

CSAs

ORGANIC FARMS

ORGANIC FARMSTANDS

GREEN SCHOOL SITES

We hope to obtain funding to create a printed map that will be easily accessed by visitors and available through prime locations.

Introducing Princeton...



Sustainable Jersey Rating: Certified

Contact Person:

Andrea Malcolm

amalcolm@princeton-township.nj.us

609-924-5366

[Profile](#)



**SUSTAINABLE
PRINCETON**

Open Green Maps Website

OpenGreenMap.org/princeton

Organization Website:

SustainablePrinceton.org

Maps in Progress

Princeton Green Connections

Description of Green Map:

The “Princeton Green Connections” Green Map is intended to highlight Princeton’s green space resources, and the bicycle and pedestrian trails that connect us to these resources.

These community groups, stakeholders, government agencies, schools, etc. are contributing to our Green Map:



In addition to Sustainable Princeton volunteers, the following organizations are helping contribute to the “Princeton Green Connections” Green Map:

- D & R Greenway Land Trust
- Friends of Princeton Open Space
- Princeton Borough Shade Tree Commission
- Princeton University Office of Sustainability

Information and advice have also been contributed by staff and/or volunteers at the Princeton Environmental Commission, Princeton Public Library, Princeton Recreation Department, the Princeton Regional Planning Board, Princeton Township Engineering Department, and the Princeton Joint Pedestrian and Bicycle Advisory Committee.

We look forward to adding more contributors in the future, as we go public!

Here's how we are letting members of our community know about our Green Map project, and what's going on!




- On-going announcements & updates at monthly meetings and events; and via Email-blasts and Twitter.
- Feb. 2012 Website Post “Green Map Coming to Princeton”
- Feb. 2012 Introduction of “Princeton Green Connections” (PGC) Green Map project at Sustainable Princeton Great Ideas Breakfast
- Mar. 2012 “Green Mapping on St. Patrick’s Day” Public Workshop
- April 2012 PGC Green Map display at Friends of Princeton Open Space “Princeton Walks” event

We hope to publish the PGC Green Map on or around Earth Day – 4/22/12;

We will then ask map contributors to help with a publicity drive over the next few months, including displays at Whole Earth Center Earth Day Birthday, Communiversity and Riverside School Healthy Children Healthy Planet Fair.

Princeton Green Connections

Princeton United States

 This map is private and can only be seen by members of the mapmaking team

View Map

Edit

About

Map Dashboard

Widget

Map Team

Add a Site

Add a Route

Add an Area

Invite new members

Import/Export




Legend

Info



Search

Green Map Icons



-  Sustainable Living ☒
-  Nature ☒
-  Culture and Society ☒

Routes and Areas

-  Routes ☒
-  Areas ☒

DONATE

Map

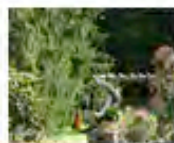
Satellite

Hybrid

Terrain



Greenway Meadows/Johnson Education Center



609 924 4646

 Add first comment



Princeton Green Connections

updated 04/2012 by DR Greenway



Here are some of our future plans & where we see our project going.



Future Princeton Green Maps?

- Green Buildings & Technology
 - Green/BYOBag Businesses
- Cultural/Historic Resources
 - Special Events/Tours
 - More!

“Princeton Green Connections” Green Map

- Public Parks
- Private Open Space
(open to public)
- School Gardens
- Trails/Paths
- Bike Routes
- Princeton Public Library
- Princeton Farmers
Market/Hinds Plaza
- Street Trees
- Gardens/Plants
- Waterways

Introducing Montgomery Twp...

Sustainable Jersey Rating: **Certified**

Contact Person:
Lauren Wasilauski
908 359 8211

[Profile](#)



Open Green Maps

www.opengreenmap.org/montgomery

Website :

montgomery.nj.us/

Description of Green Map:

The Green Mapping project was initiated as an effort of 4 municipalities along the Route 206 corridor - Lawrence, Princeton, Montgomery & Hillsborough. We hope to map resources such as open space and parkland; bikeways, sidewalks, pathways and public transportation; cultural and historic resources; and local businesses. A series of mapping sessions will be held, with members from all 4 communities present, and the general public invited.

Green Mapping would empower residents to engage with their communities in totally new ways that promote health, outdoor living, sustainability, and community involvement. Green Maps would make our residents more aware of natural places and open space in the township, businesses and organizations which promote green living, and pathways and bikeways that interconnect all of these so that residents can truly live locally and more "convivially".

One specific goal of the mapping process is to highlight local businesses and support an on-going "Shop Local" campaign. The map will make residents of our community and the surrounding communities aware of the wealth of services available locally.

These community groups, stakeholders, government agencies, schools, etc. are contributing to our Green Map:



Here's how we are letting members of our community know about our Green Map project, and what's going on!



Join us at the Hillsborough Library for a

Green Mapping Workshop

A Green Map plots the locations of a community's natural, cultural and sustainable resources raise awareness of natural places and open space in the township

GIS  Wednesday, Oct 5 at 7 PM

Join us with BoroGreen and co-sponsor Sustainable Hillsborough to map green initiatives in our region such as farm locations, green businesses, parks, and trails. One goal is to help create a regional bike way from Hillsborough through Montgomery, Princeton, and ending in Lawrence Township.

Other areas included are public transportation options, solar/wind installations, cultural and historical points of interest, art galleries, public sculptures, community gardens and much more!

Join us to learn more about green mapping and global information systems. Any one with ideas or suggestions for points of interest to be added to the map are encouraged to attend!

Interested in learning more? Check out <http://www.greenmap.org/> for more information.

Registration can be done using our online library calendar, or at the Adult Services Desk. For more information, or to register, call Adult Services at 908-369-9200 ext 12.



FALL '11

Municipal and Community Newsletter

PAGE 6

MONTGOMERY SELECTED TO DEVELOP GREEN MAP WITH NEIGHBORING TOWNS

Recently, Montgomery, Hillsborough, Princeton and Lawrence Townships were awarded a grant to create a "green map" of the Route 206 regional corridor. The application was a joint effort of all four municipalities, and each will be involved in the mapping process.

A series of workshops, webinars and meetings with professional consultants will help each municipality map its resources including open space and parkland; bikeways, sidewalks, pathways and public transportation; cultural and historic resources; and local businesses. The goal of the green map is to promote sustainable living, for example by highlighting recreational and historic sites, opportunities to shop locally, and other community resources such as farmers' markets, art galleries and places of worship. Once the mapping is complete, the municipalities will make the map available to the public in paper form, as well as on each municipality's website.

The first public map development session is scheduled for October 5 from 7:00 PM to 8:30 PM at the Hillsborough Library. All residents are welcome to attend to offer their input and to help identify resources

in our communities to include.

This grant was offered through the Sustainable Jersey program, in which all four municipalities participate. Montgomery Township was one of only 28 municipalities statewide certified as a "Sustainable Jersey community" in the first application round in November 2009. Currently over 340 municipalities are registered and 74 have been certified through the program.

Sustainable Jersey is a certification program for municipalities in New Jersey who wish to go green, control costs, save money, and take steps to sustain their quality of life over the long term. The innovative program is an initiative of the New Jersey State League of Municipalities' Mayors Committee for a Green Future, the Municipal Land Use Center at the College of New Jersey, the New Jersey Department of Environmental Protection, the New Jersey Board of Public Utilities, and a coalition of New Jersey non-profits, state agencies, and experts in the field. To learn more about the Sustainable Jersey certification visit www.sustainablejersey.com.

GREEN MAPPING EVENT

Room: Hillsborough Library, Program Room B Date: Wednesday, October 05, 2011

Start of Event: 7:00PM End of Event: 8:30PM

Event Details:

A Green Map plots the locations of a community's natural, cultural and sustainable resources.

All members of the Montgomery public are invited to join the Hillsborough Public Library in collaboration with BoroGreen to map green initiatives in our region such as farm locations, green businesses, parks, and trails. One goal is to help create a regional bike corridor from Hillsborough through Montgomery, Princeton, and ending in Lawrence Township. Through a Dodge Foundation grant and Sustainable Jersey, these 4 towns have sent representatives to learn how to create Green Maps <http://www.greenmap.org/> and are now joining forces so that cyclists can bicycle locally more easily.

Worked with Hillsborough to publicize Green Mapping session in October

The Township publicized the Green Map and the Hillsborough session in our newsletter.

Green Map unveiling at 2012 Earth Day Fair
Montgomery High School
April 22, 2012

Information available at:

[Montgomery Earth Day Fair Webpage](#) AND [Earth Day Fair Facebook Page](#)

Each Town is Unique...
Here's an example of a site on our map!



Montgomery Township, NJ

A screenshot of the Green Map website interface. At the top, there is a navigation bar with buttons: "View Map", "Edit", "About", "Map Dashboard", "Widget", "Map Team", "Add a Site", and "Add a Route". Below this is another bar with "Add an Area", "Invite new members", and "Import/Export". The main content area features a pop-up window for "Montgomery Arboretum of Native Flora". This window has a title bar with "edit" and a close button. Inside, there are icons of a tree and a flower, and tabs for "Overview", "Comments", "Connections", "Multimedia", and "Impacts". The "Overview" tab is active, showing a description of the arboretum, a star rating section (5 stars, "No votes yet"), a "0 comments" section with "share this site" and "flag this" links, and social media icons. To the right of the pop-up is a "Green Map Icons" sidebar with a search icon and a list of categories: "Sustainable Living", "Nature", and "Culture and Society", each with a checked checkbox. Below this is a "Routes and Areas" section with "Routes" and "Areas" also checked. A large red "DONATE" button is at the bottom right of the sidebar. The background shows a map with street names like "Devon Dr", "Matthews Farm Rd", "Harlingen Rd", "Kingswood Dr", and "Seabrights Pl". At the bottom, there is a Google logo and a "Map data ©2012 Google - Terms of Use" link. A footer at the very bottom reads: "Icons © Green Map System, Inc. 2012. All rights reserved. Green Map® is a registered trademark and used with permission." and an "Email this Green Map" link.

Here are some of our future plans & where we see our project going

Resources already mapped:

- Bus stops
- Bike lanes
- Historic bridges & cemeteries
- Places of worship
- Public buildings
 - Community / Senior Center, Municipal Building, fire houses, EMS, library
- Schools
- Montgomery Veteran's Memorial
- Other sites of interest:
 - Montgomery Arboretum, Native Plant Garden, Dog Park, Sledding hill

Resources to be mapped:

- Preserved open space & farmland
- Parks
- pathways
- Local businesses
- Farm markets / farm stands
- Landmark trees

Challenges & Obstacles



- **Inability to integrate existing GIS data**
 - Township has extensive data already mapped in GIS, but cannot upload this information to Green Map
 - Duplication of effort and Green Map would be less accurate
- **Privacy concerns**
 - Landmarks Commission was concerned about mapping historic sites (i.e. historic homes, cemeteries) on private property in order to respect privacy of private landowners
 - Didn't want to create negative incentive for other owners to designate their homes
 - Landmarks Commission agreed to consider this issue further, and possibly approach landowners in the future

Introducing Hillsborough...



Sustainable Jersey Rating: Certified

Contact Person:

Thuy Anh Le

info@borogreen.org

[Profile](#)



Open Green Maps

Website:

OpenGreenMap.org/greenmap/historical-sites

borogreen.org/

Description of Green Map:

Green Mapping will empower residents to engage with their communities in new ways that promote health, outdoor living, sustainability, and community involvement. Currently some of our towns do not have useful maps for residents, while some have maps for parks or trails and bikeways only. Green Maps would make our residents more aware of natural places and open space in the township, businesses and organizations which promote green living, and pathways and bikeways that interconnect all 4 towns: Hillsborough, Montgomery, Princeton, and Lawrence.

Green Map Grant

- Map the contiguous green corridor that exist between the communities of Hillsborough, Montgomery, Princeton, and Lawrence.
- Empower residents to engage with their communities to promote health, outdoor living, sustainability and community involvement.
- Make our residents more aware of natural places in our towns, businesses and organizations which promote green living, and pathways and bikeways that interconnect our communities.
- Promote the natural landmarks such as the Sourland Mountain Preserve and the Delaware & Raritan Canal State Park.
- Develop a cohesive plan to promote and foster our communities.

Hillsborough Discovery Trail



What are the goals of the 4 towns



- To cultivate a community base that understands and actively applies Green Maps to promote sustainable features and initiatives.
- To share and map green initiatives and features such as farms, local businesses, trails, and parks.
- To create a regional bike way through Hillsborough, Lawrence, Montgomery, and Princeton townships and map it. (1st Layer)
- To work together to add more layers such as a buying local map, historical/cultural map
- To map our town's [treasures](#)

Community Involvement



Cycling Club



Interact Club



Girl Scouts



Historical Commission



What do we want to encourage?



- Use of bikeways, pathways and sharrows
- Public transportation options
- Buy local, BYOB, buy organic, community gardens
- Potential use of unimproved public lands - GSA Depot in Hillsborough
- Highlighting of Green Team Project areas - roadside cleanup, rain gardens, etc.
- Highlighting solar and wind installations
- Exposure of little-known historical and cultural points of interest
- Highlighting art galleries, art studios, public sculpture installations especially Princeton and Lawrenceville
- Improve knowledge of open space, farmland, land use, and development to encourage public input

What can be added to this list?

Hillsborough Library, Sustainable
Hillsborough, Sustainable Montgomery/
EC, Sustainable Lawrence, Sustainable
Princeton

A community action organization devoted
to sustainability and environmentally smart
practices that build a sense of community
and improve life for ourselves and future
generations.

Partnering with Library



Join us at the Hillsborough Library for a

Green Mapping Workshop

A Green Map plots the locations of a community's natural, cultural and sustainable resources and raises awareness of natural places and open space in the township.

 **GIS**

 **GREEN MAP**

**Wednesday,
Oct 5 at 7 PM**



Join us with BoroGreen and co-sponsor Sustainable Hillsborough to map green initiatives in our region such as farm locations, green businesses, parks, and trails. One goal is to help create a regional bike way from Hillsborough through Montgomery, Princeton, and ending in Lawrence Township.

Other areas included are public transportation options, solar/wind installations, cultural and historical points of interest, art galleries, public sculptures, community gardens and much more!



Join us to learn more about green mapping and global information systems. Anyone with ideas or suggestions for points of interest to be added to the map is encouraged to attend!

Interested in learning more? Check out <http://www.greenmap.org/> for more information.

Registration can be done using our online library calendar, or at the Adult Services Desk. For more information, or to register, call Adult Services at 908-369-2200 ext 12.

 **HILLSBOROUGH LIBRARY**
279 South Pierce St. Road
Hillsborough Municipal Complex
Hillsborough, New Jersey 08034
(908) 369-2200
www.hillsgov.org



Showing how to add sites...



Green Map Impacts



There are over 800 projects in 64 countries and 775 Green Maps are published!



What the community would like to map:



- invasive plants, native plants, landmark trees, fruit trees with public access, examples of proper mulching
- Some residents added comments to the [article](#) we posted on Patch online to generate interest.
- Ideas generated from the public library workshops were highlighted in a [Patch article about Hillsborough launch of Green Maps](#)
- The Hillsborough Public Library has highlighted the Green Maps workshop on their Facebook page.
- This entry was added to the Facebook page of one of our volunteers:
“After receiving the grant last fall and running 2 workshops at the library to get feedback from residents, we've finally launched the first sites on OpenGreenMap.org featuring historical sites. More to come! bicycle trails, farms, you name it!”

Potential Regional Projects/Events



- Central Jersey Tour des Farms
- Central Jersey Family Biking Scavenger Hunt
- Flashlight cemetery tour to highlight historical sites
- Join county-wide touring historical sites event

Who could be partners and help plan the event?

- North Jersey RC&D
- West Windsor Bicycle and Pedestrian Alliance
www.wwbpa.org
- BoroGreen www.borogreen.org
- Girl Scouts and Boy Scouts
- Interact Club at Hillsborough High School
- Hillsborough RoboRaiders

Green Maps bring it all together



Green Maps bring people of all ages together to **discover**, **share** and **care** for their communities



Thank you, Green Teams!

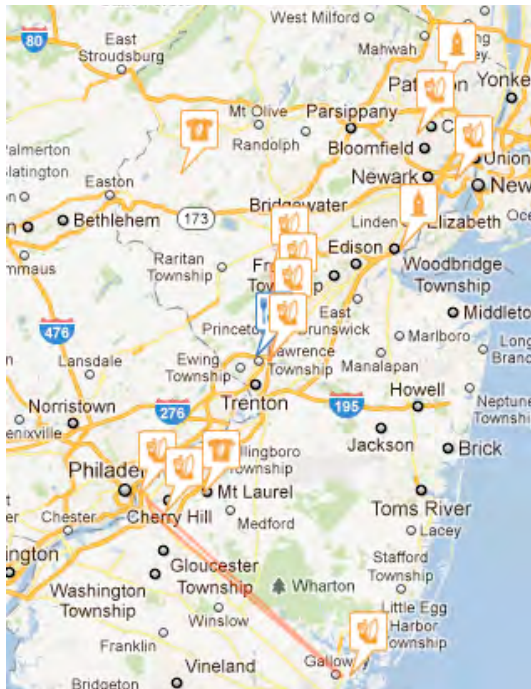


We hope you enjoyed these Year One Exchange Reports by Sustainable Jersey Green Teams.

With Year Two support from the Geraldine R Dodge Foundation, Green Teams across the state will continue to expand their projects, partnerships and mapmaking initiatives.

Follow their progress at

GreenMap.org/snj



info@greenmap.org



Tahirah Smith of Sustainable Lawrence opens the workshop



Hillsborough, Montgomery, Princeton and Ewing Green Teams took part, along with several people from Lawrence Twp.



Discussion and networking rounded out the event