

# Wetland Restoration in Taipei County

Society of Wilderness, Taiwan | sow@sow.org.tw

http://SOW.org.tw

Author: Society of Wilderness, Taiwan



## Background: Connection Between the Wetland and Community

Taiwan's Society of Wilderness (SOW) was founded in 1995 with objectives of nature education and conservation. Activated by more than 11,000 family members and many volunteers, SOW is a significant non-profit organization in Taiwan. Since 2001, SOW started to promote Green Map by training volunteer guides to assist mapmakers in charting their communities. 58 folding

Green Maps have been published to date, including city, community, school and corporate maps. In June 2007, SOW hosted the Asia Green Map Hub Meeting in Taipei.

In 2004, SOW adopted the wetland along the TanShui River from Taipei County Government. In the 1 square kilometer wetland, SOW carried out ecology restoration, education, research and investigation. For Earth Day 2007, 10,000 copies of the

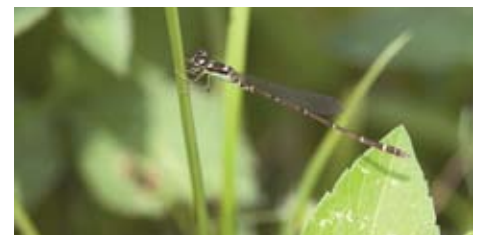
TanShui River Corridor Green Map were published. The maps are distributed to local people and visitors for biking, tours and teaching school outdoors.

Since the TanShui River passes through the center of Taipei, we expect that the wetland ecosphere is closely linked to communities. Therefore wetland conservation can be linked to citizens' daily life through Green Maps.



Creation of a floating island

Taipei County Wetland and TanShui River Corridor Green Maps



Mortonagrion Hirosei Asahina - First discovered in Taiwan, IUCN has listed it as a threatened species



## Impacts: From 1 Square Kilometer to 2,052 Square Kilometers

Inspired by the TanShui River Corridor Green Map, a Taipei County Wetland Green Map is expected to be completed in 3 years, charting a total area of 2,052 square kilometers. Students and teachers will chart the wetland and community as a living circle, which encourages citizens to cherish the green treasures nearby. We also expect Taipei County's wetland habitats to be connected as a network to improve the existing environment for birds and other wetland animals.

Special thanks to Lai Rong Jiao, a high school teacher and member of SOW who is the key person behind the TanShui River wetland conservation and the Wetland Green Map.