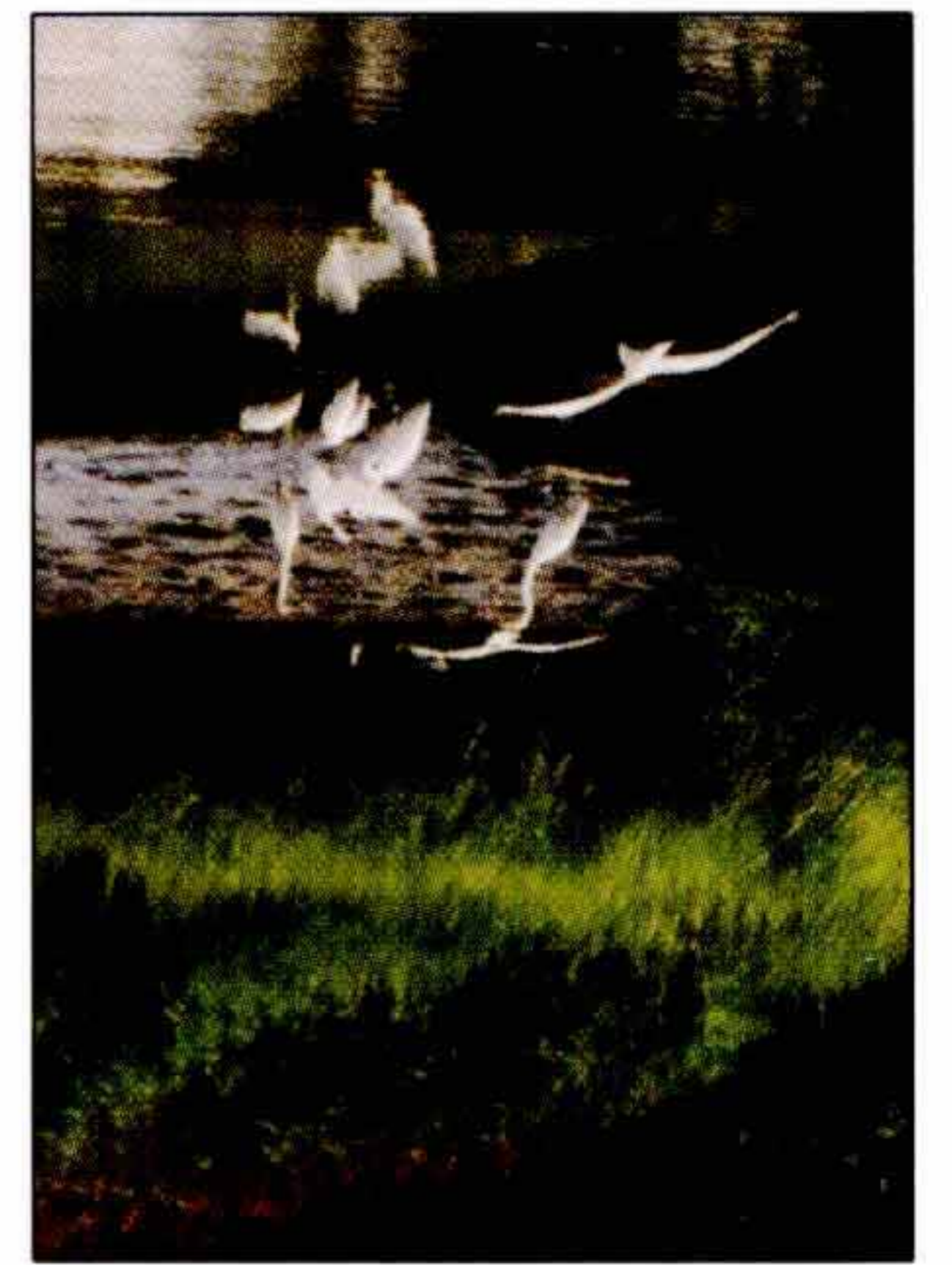


In the Meadowlands there are award winning parks planted with special trees. We are located on the Atlantic Flyway, a major migratory corridor. Don't miss our nationally acclaimed Environment Center, where you can register for a walking tour or book an evening cruise to see wildlife. Visit our waterfront parks, where you can canoe one of our water trails. Our wetlands provide critical habitat for plants and animals and serve as a living laboratory for scientific research. We have unique landform/geological features, both natural and man-made, including landfills. Former landfills serve many beneficial uses: wildlife habitat, recreational opportunities, and regional compost sites. See the Meadowlands on foot, use public transportation, or use the park & ride lot. This map will help chart your course to the beauty, brilliance, and diversity of the Meadowlands District.



What do the symbols mean? Each of the green sites and other resources is indicated by a Green Map icon; a globally-shared language of symbols. The icons make it easier to find important places and help to illustrate the interconnections between nature and the developed environment.



INCLUDED ON THE GREENMAP ARE:



TRAILS AND PARKS

The two major trail projects indicated on the Green Map are:

Meadows Path is a 25.5 mile trail system running parallel to the western bank of the Hackensack River from Little Ferry to Kearny.

The Hackensack Greenway is a 15 mile trail running parallel to the eastern bank of the Hackensack River from North Bergen to Jersey City.

Both trails serve as green corridors that wind through towns and natural areas, connecting parks and other open spaces.

Together, they will create 40.5 miles of non-vehicular green arteries through 11 of the 14 Meadowlands District municipalities, linking open spaces, neighborhoods and commercial developments both within and outside the District.

WETLANDS CONSERVATION AREAS Wetlands are a vital component of a healthy coastal ecosystem. These wetlands purify water, alleviate flooding, and provide critical habitat for hundreds of species of plants and animals.

PRESERVATION AREAS Today the Meadowlands Commission holds in it's possession more than 2,500 acres of land that will be permanently protected from future development.

LANDFILL RESTORATION SITES Existing and former landfills are being reclaimed because they are the last vast open spaces in this densely populated region. The transformation from garbage dump to wildlife habitat and recreational area occurs after landfills are closed and remediated according to state standards.

WATER BODIES All of the major waterways and waterbodies within the District are identified on the Green Map.

We hope you enjoy your tour!

New Jersey Meadowlands Commission

1 DeKorte Park Plaza
Lyndhurst, NJ 07071
201-460-1700

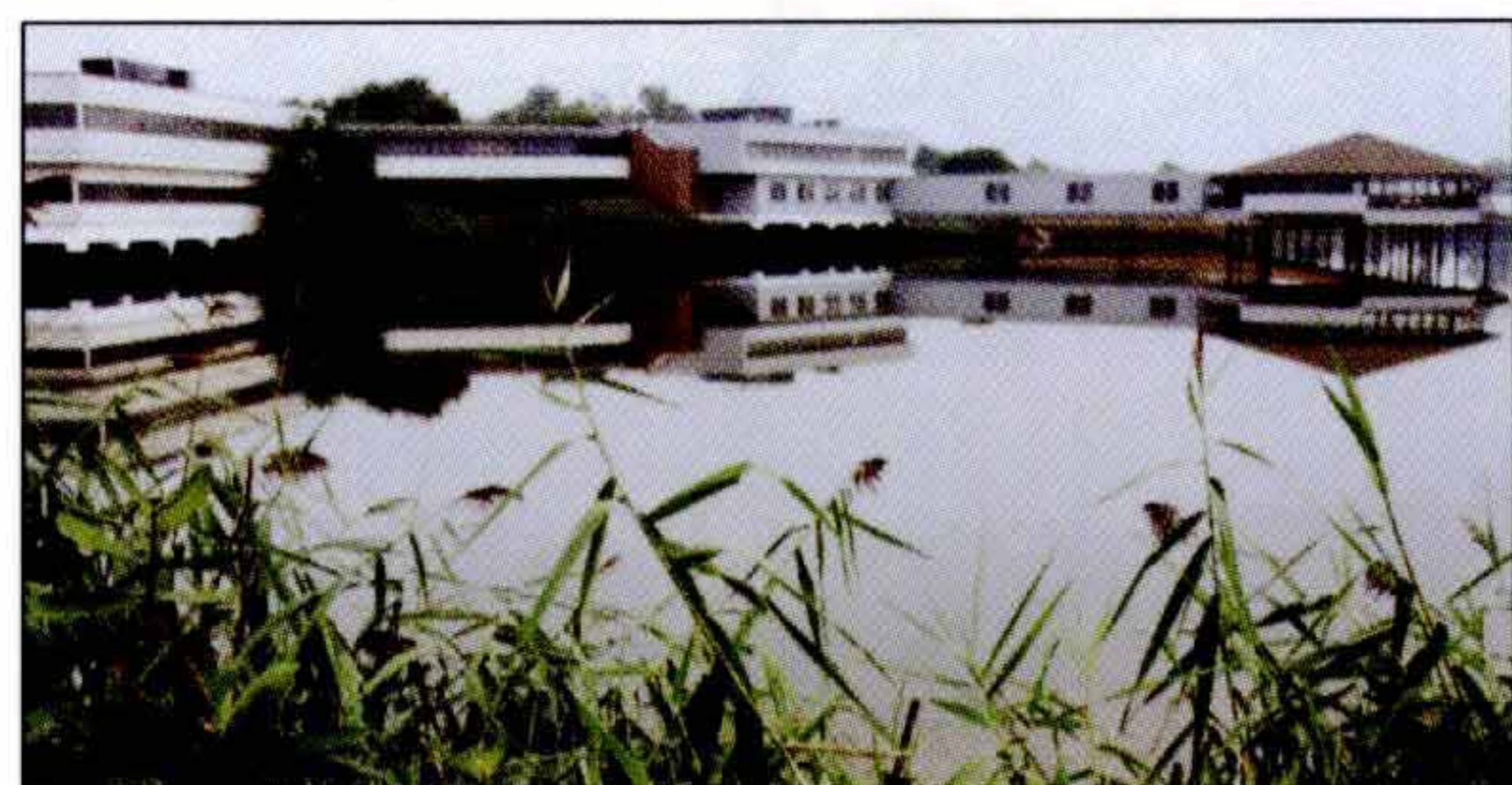
Governor
James E. McGreevey

Chairman
Susan Bass Levin

Board of Commissioners

James A. Anzevino
Michael J. Gonnelli
Leonard R. Kaiser
Mia M. Macri
Eleanore S. Nissley
Arleen Walther

Executive Director
Robert R. Ceberio



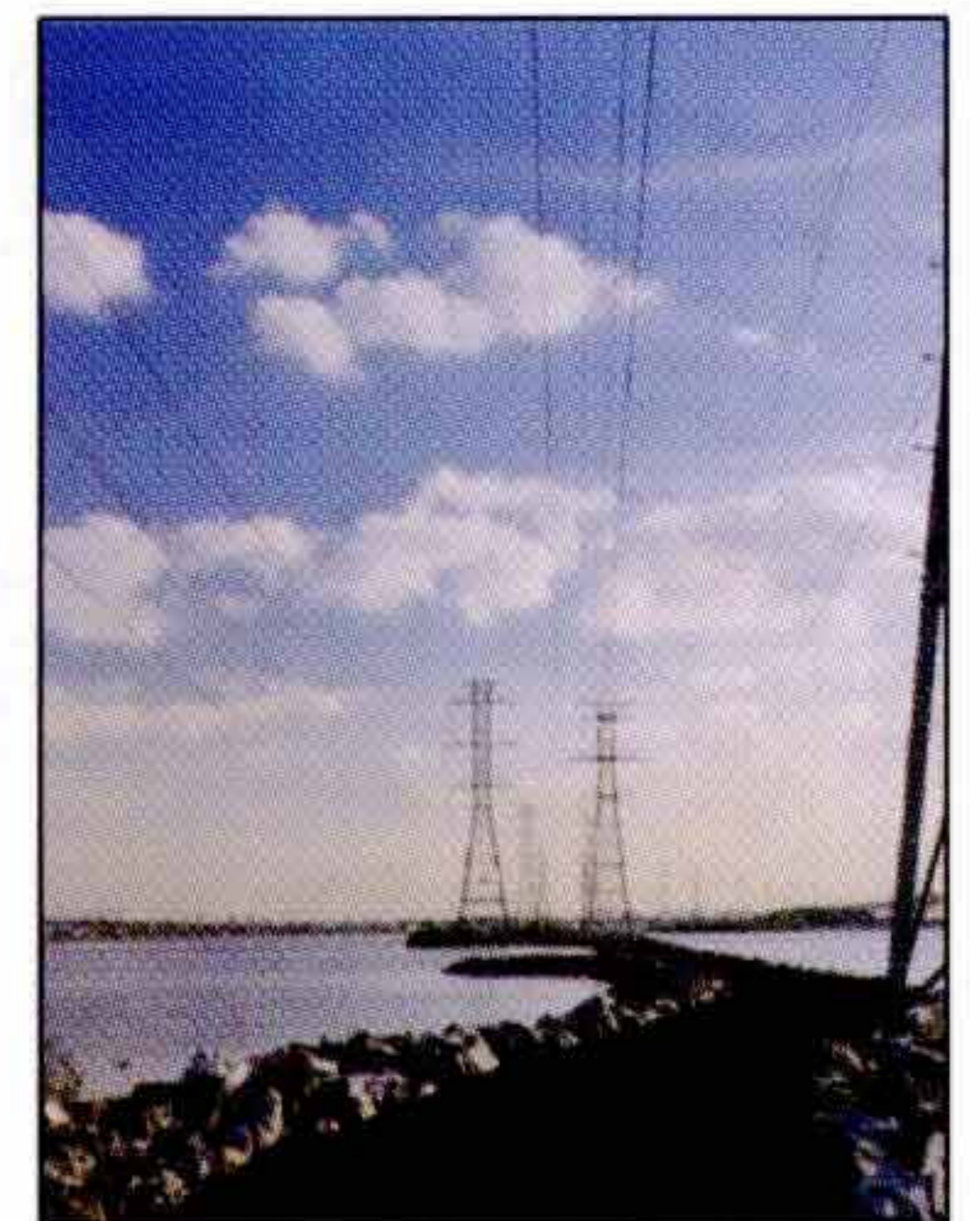
For more information about the Meadowlands Commission go to our web site:
www.meadowlands.state.nj.us

If you have suggestions or comments regarding this map please email us at:
info@meadowlands.state.nj.us

Visit the Green Map website at www.greenmap.org for information on other cities in the process of creating Green Maps.

© Modern World Design 1996-9 All Rights Reserved
Rv 9-2002-1M

New Jersey Meadowlands Commission GREEN MAP



This Green Map indicates environmentally significant "green" sites – outstanding places of natural beauty, wildlife habitats, nature paths, cultural sites, our environment center, and man-made features that make an area special.

1 DeKorte Park Plaza Lyndhurst New Jersey 07071

GREEN MAP



LEGEND

- Parks & Recreation Areas
- Landfill Restoration Areas
- Wetlands
- Water Bodies
- Preservation Areas

GREEN SPACES

- Major Park
- Athletic Field
- Watchable Wildlife
- Special Plants
- Waterfront Park
- Boat / Canoe Launch Site
- Site of NJ Meadowlands Commission Boat Launch
- Canoe Launch Only
- Canoe Launch Only (proposed)
- Meadowlands Environment Center
- Golf Course
- Enhanced Wetlands
- Scientific/Research Site
- Flyover Zone
- Compost Site
- Landform
- Recreational Fishing Spot (Catch and Release Policy)

TRAILS

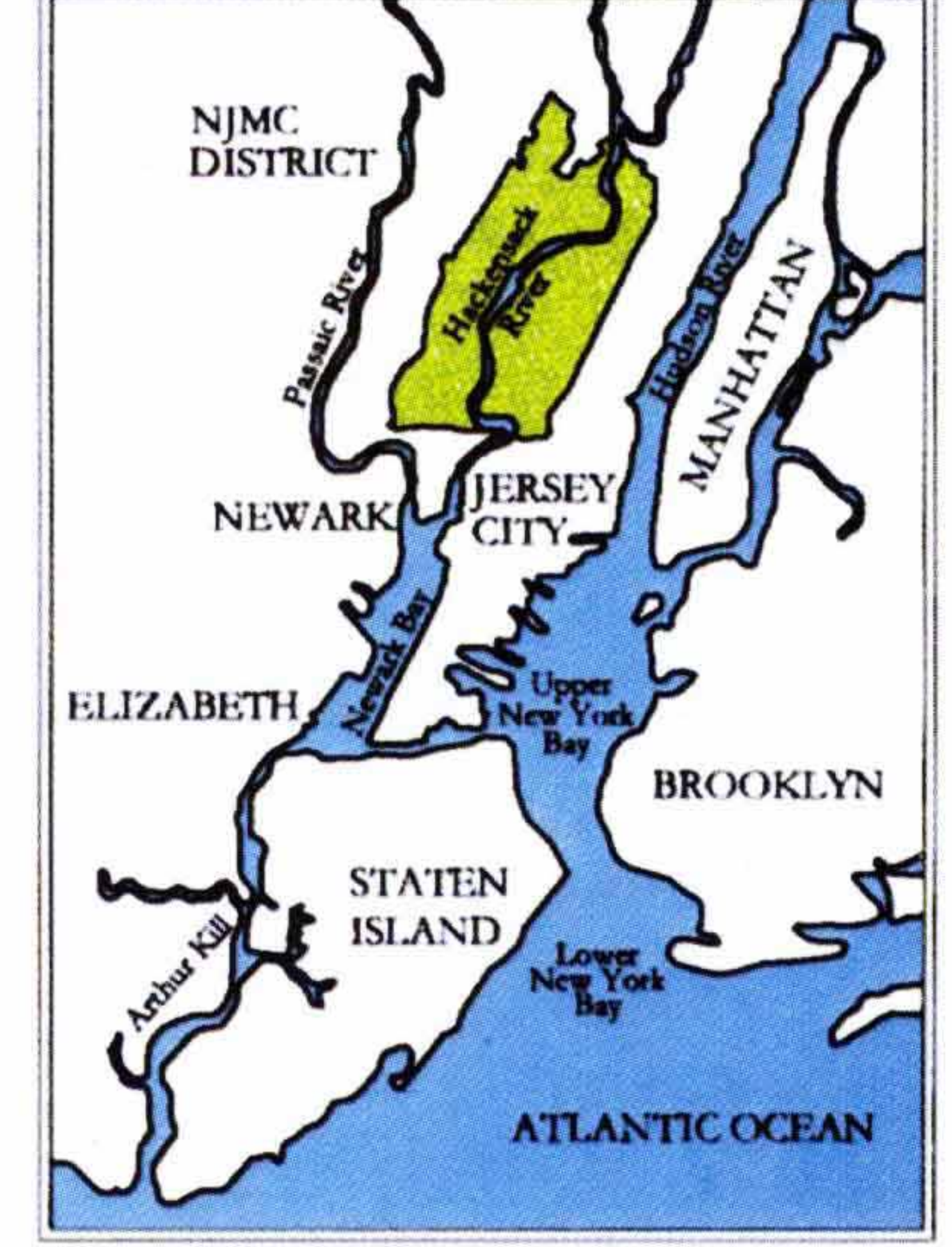
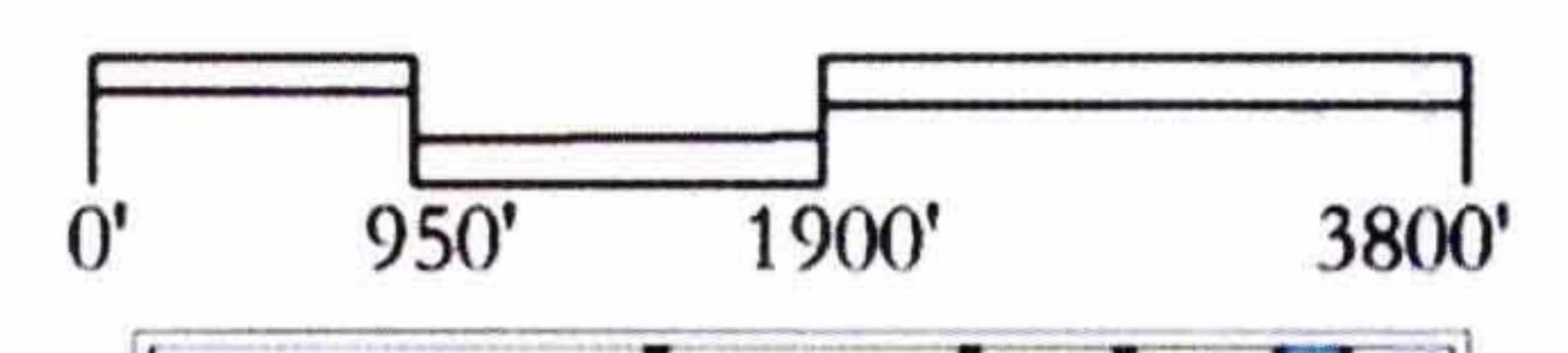
- Meadows Path (existing)
- Meadows Path (proposed)
- Hackensack Greenway (existing)
- Hackensack Greenway (proposed)
- Water Trail (Canoe / Boat)

MOBILITY

- Rail/Transfer Station
- Light Rail Transit (proposed)
- Park & Ride Facility
- Historic Feature
- Rail Line

INFRASTRUCTURE

- Radio Tower
- Energy Facility



Produced by: NJMC Landscape Architecture Group
Available in 24" x 36" size Printed: May 2002
This map is revised every six months

The Green Map System (GMS) charts the interconnections between nature and culture in urban places. Each Green Map is created locally and utilizes globally designed green space icons, a shared language of symbols. The Green Map System is a not-for-profit organization. To learn more about GMS, visit www.greenmap.org or call 212-674-1631. For further information on the New Jersey Meadowlands Commission, visit our web site at: www.meadowlands.state.nj.us. If you have any comments or would like a poster size green map or additional brochures, please email kweidel@meadowlands.state.nj.us.

New Jersey Meadowlands Commission