

OPEN DATA WEEK 2021

MARCH 6-11

Powered By **NYC OpenData**



Workshop

Open Green Map 2 - OGM2 and YOU!

Tuesday, March 9

1:00 pm to 2:00 pm

RSVP <<https://bit.ly/OGM2ODW>>



Tuesday, March 9 1:00 pm ET

Open Green Map 2 • OGM2 and YOU!

Speakers:

Alexandra Casapu GIS Collective

Bogdan Szabo GIS Collective

Wendy Brawer Green Map System

Mary Hunt FEEDJeffCo

new.opengreenmap.org





GIS Collective
Alexandra Casapu
Bogdan Szabo





GIS Collective

GeoData for everyone





Our idea

A platform that makes it easy to collaborate on mapping projects.



open-source



user-friendly



flexible



How we plan to make it accessible

We focus on tackling fundamental challenges of users, so that they won't need to implement or buy yet another solution for every project.



Easy to deploy
and scale



Easy to customize
and adaptable
to your data



Works on web
and mobile



Works online
and offline



How does it work?

We're collaborating closely with Green Map to incorporate feedback and expand the platform.

Step 1

Make an account at new.opengreenmap.org.

Step 2

Add a Team.

Step 3

Make your Map, and optionally a Campaign associated to it.

Step 4

Start mapping! Add points, lines or polygons to your map, and invite others to contribute.





Supporting Open Data

- Set a license for your mapping project
- Share and extend icons
- Control the privacy of your data
- Download the data in various formats
- Data import and export
- Use any basemaps



**OPEN
DATA
WEEK
2021**

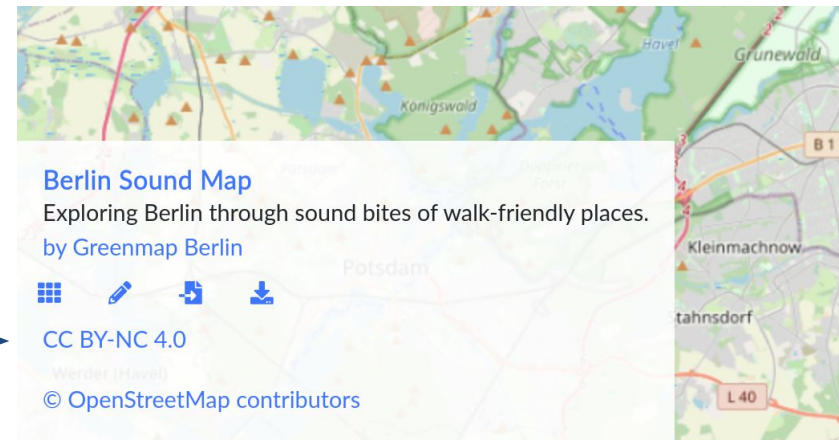


Map license

License

name

url



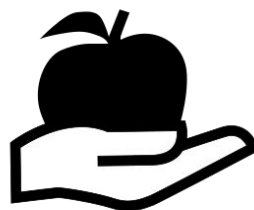
OPEN DATA WEEK 2021

Powered By
NYC OpenData



Icons as open data

Make your custom set by extending existing icons to customize color and attributes.



OPEN DATA WEEK 2021



Icons with attributes

Attributes

	Name	Display name	Help message	
↑	<input type="text" value="species"/>	<input type="text" value="What species is this?"/>	<input type="text" value="Some common ones are honey bees, bumblebees, and stingless bees."/>	
	Type			
	<input type="text" value="short text"/>			
<hr/>				
↑	<input type="text" value="managed"/>	<input type="text" value="Is this hive managed?"/>	<input type="text"/>	
	Type			
	<input type="text" value="boolean"/>			
<hr/>				
↑	<input type="text" value="size (# colonies)"/>	<input type="text" value="How many colonies are there?"/>	<input type="text"/>	
	Type			
	<input type="text" value="integer"/>			

[+ attribute](#)



OPEN DATA WEEK 2021



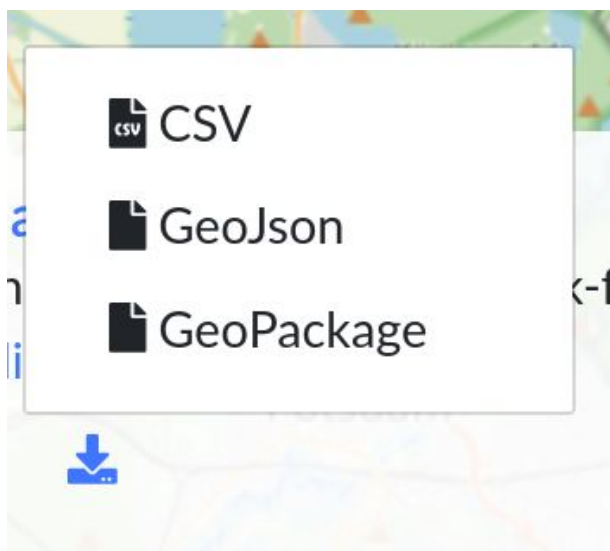
Privacy controls

- **Location masking**
 - Use-case: protecting wildlife
- **Public/private/pending** visibility states for maps and features
 - Use-case: reviewing crowdsourced data before publishing
- **Coming soon: fine grained visibility control** of individual data sections of each feature type(points, lines, polygons)
 - Use-case: publishing data while protecting sensitive attributes used internally





Download formats



**OPEN
DATA
WEEK
2021**



Basemaps

Attributions

- Map tiles by Stamen Design at <http://stamen.com/>
- © OpenStreetMap contributors at <https://www.openstreetmap.org/copyright>

Icon

Layers

1.

^

v

Stamen

Visibility

on all zoom levels

layer

toner

terrain

watercolor

2.

^

v

GISCollective Map

Visibility

between

0

22

Map

Berlin Sound Map

+ Layer

Save

Cancel

OPEN DATA WEEK 2021

Powered By
NYC OpenData



Keep in touch

We're happy to receive questions and ideas:

hello@giscollective.com

 @GIS_Collective

Sign up to get our newsletter on giscollective.com

You can try out the platform here:

new.opengreenmap.org

app.giscollective.com



**OPEN
DATA
WEEK
2021**

Powered By
NYC OpenData



OPEN DATA WEEK 2021

Powered By
NYC OpenData

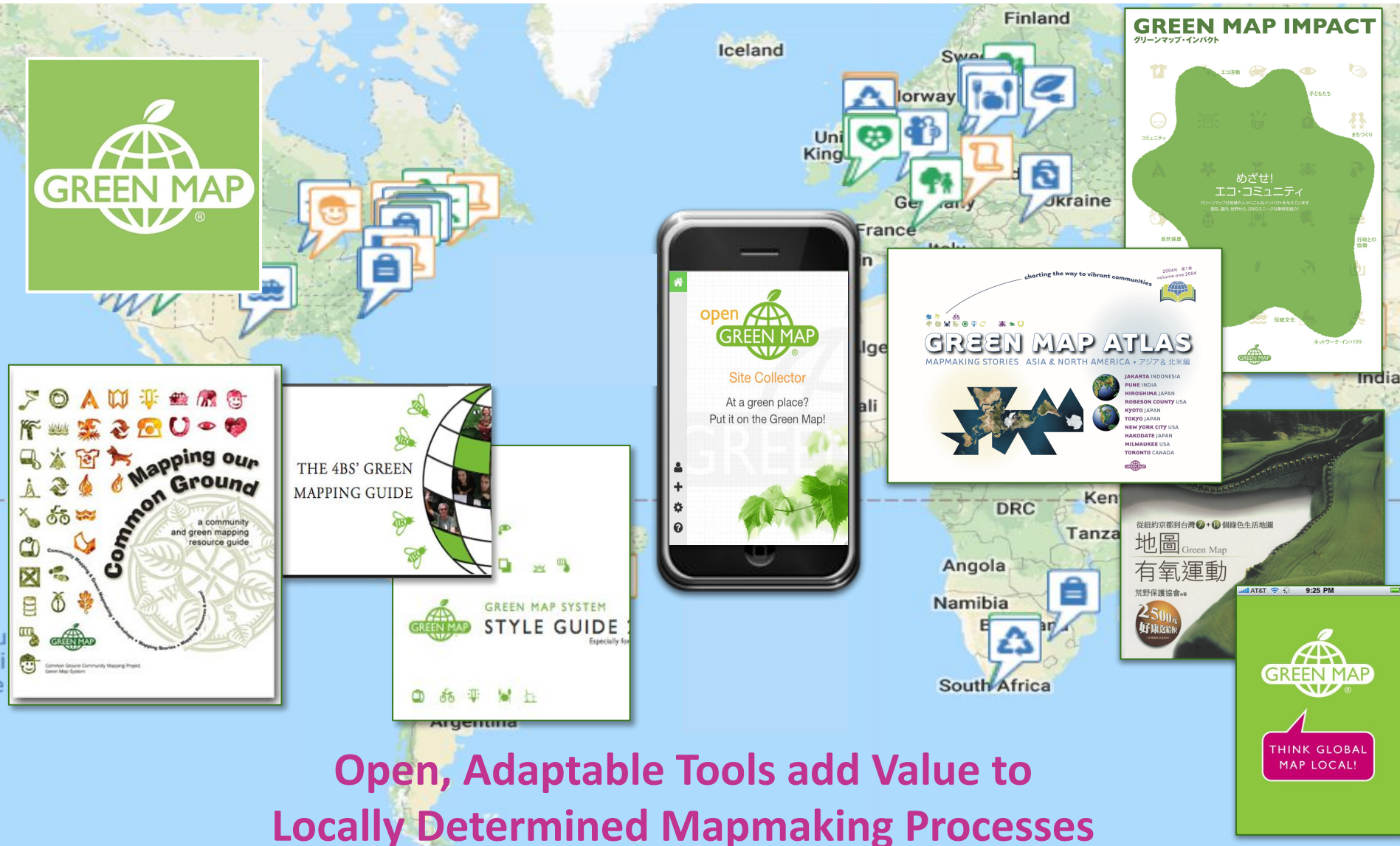
Diverse users, all contributing locally towards a better planet

Diverse strategies and requests to test platform flexibility



Green Map System Connects Projects & Shares Strategies

- Collect, Assess & Share Outcomes • Create New Tools



Open, Adaptable Tools add Value to
Locally Determined Mapmaking Processes

-

Two 3.5-inch floppy disks are shown overlapping. The top disk is black with a white label area and a circular metal hub. The bottom disk is green. Both disks have a small square notch on the left side.

Green Map Icons V3 - MENU	Genre	Category	No. of Icons	
	Sustainable Living	Green Economy	17	
		Technology & Design	15	
		Mobility	13	
		Hazards & Challenges	18	
Nature	Nature	Land & Water	11	
		Flora	9	
		Fauna	12	
		Outdoor Activities	14	
Culture & Society	Culture & Society	Cultural Character	18	
		Eco-Information	12	
		Justice & Activism	14	
		Public Works & Landmar	16	



Green Map® Icons Version 3

• Sustainable Living • Nature • Culture & Society

This set of 170 collaboratively designed icons identifies, promotes and links thousands of sustainability sites on hundreds of locally created Green Maps and projects. Translated posters, participatory resources and more at GreenMap.org/icons

GREEN ECONOMY



MOBILITY



TECHNOLOGY & DESIGN



HAZARDS & CHALLENGES

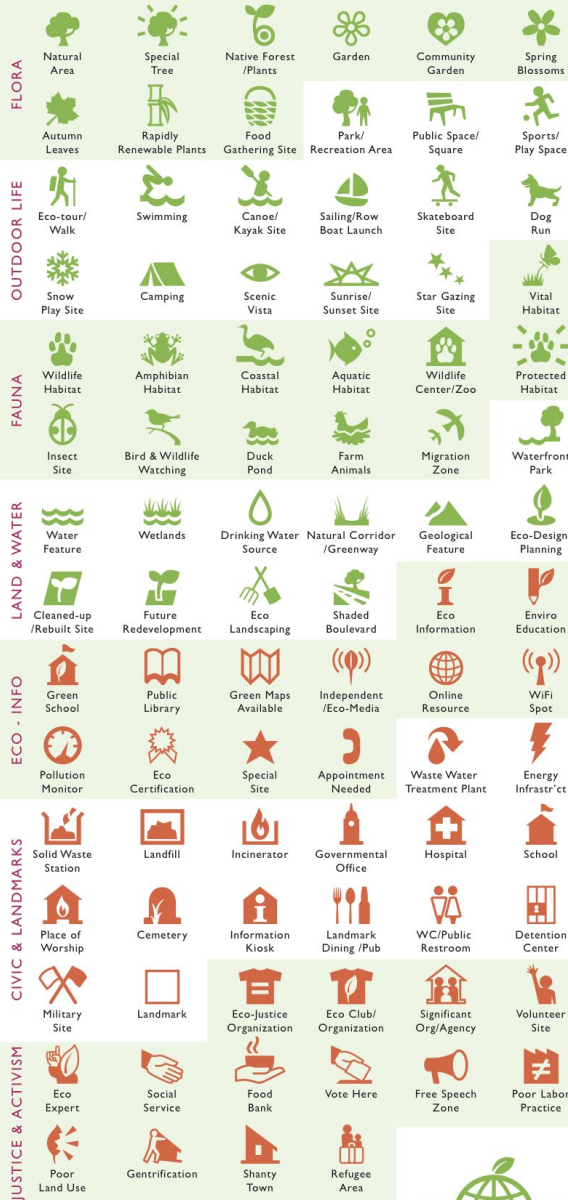


CULTURAL CHARACTER



Green Map System Icons

CC BY-SA Creative Commons 4.0



Think global, map local!

Explore at GreenMap.org

Contact us: info@greenmap.org



GreenMap.org/icons

- Green Living
- Nature
- Culture & Society



GreenMap.org is stories-based

Show All

Civic

Culture

Energy and Climate

Family

Food

Getting Around

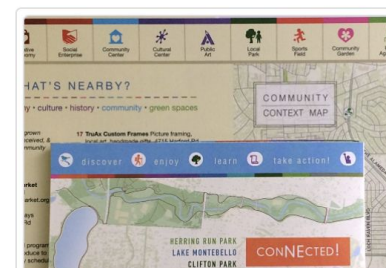
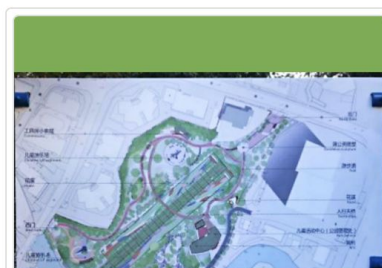
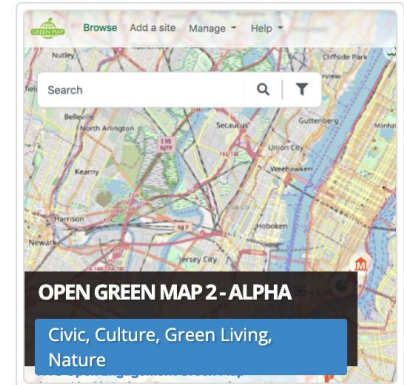
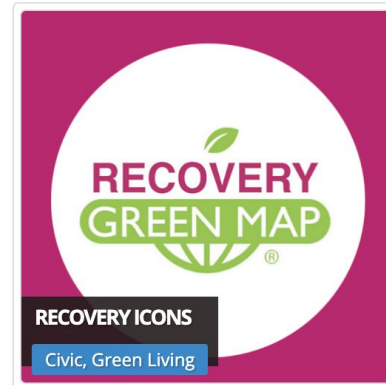
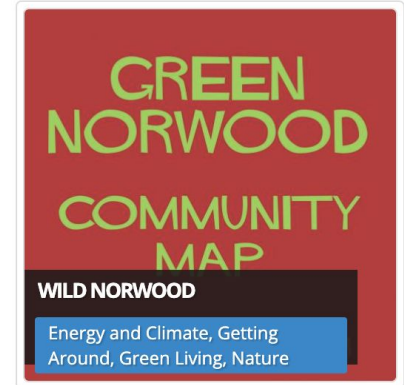
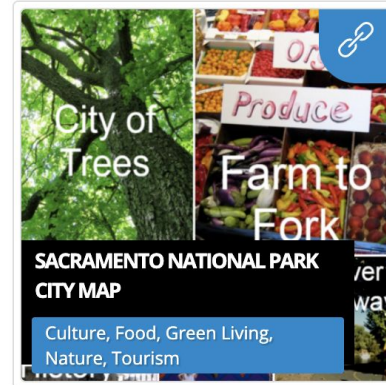
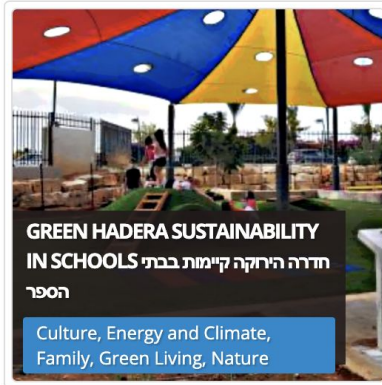
Green Living

Nature

Rural

Social Justice

Tourism



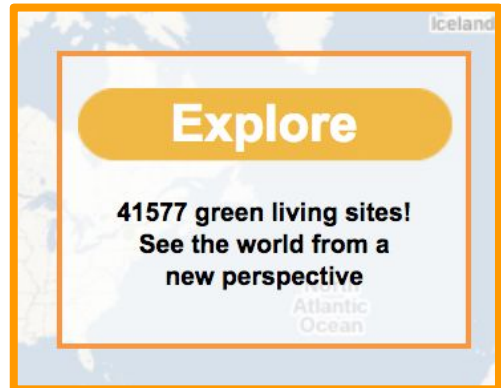
Hundreds of print & interactive maps



Delivering the Archive to NYPL Map Room

2009: Our first platform was 'open' in that it was open to public site suggestions and viewpoints

- more than 500 maps made in 40 countries
- all data moved to OGM2





OPEN KNOWLEDGE *festival*
17.-22.9.2012 HELSINKI



At Green Map System, we are starting down a new road....

Since 1995, Green Map has been a participatory initiative. We have co-created icons, engagement tools and mapmaking infrastructure utilized by hundreds of mapmakers in 65 countries. Open Green Map, our interactive platform, provides an intuitive resource with every site open to public commentary. Now, we are taking the next step to truly "going open". Please take the journey with us as we open our data and much more to support a sustainable future.

Milestones on Green Map's Road to Open

Secure Support

- Revise existing business plan and fee structure.
- Secure financial support to update our website and develop APIs.
- Extend our tech support network.

Legal Framework

- Explore and update open terms of service for Green Mapmakers, content contributors, partners and website users.
- Develop an **Open Advisory** group with outside experts, legal help, our network and our board.

Technology

- Enable Mapmakers to **open** each of their Open Green Maps.
- Open Green Map platform interoperability leading towards API.
- Update Green Map Icons and promote sharability.

Communications

- Engage existing and potential Green Mapmakers in our **Open Initiative**.
- Update tool kits, FAQs and related mapmaking resources.
- Public and media outreach.

Continuity

- Extend partnerships, platforms and applications.
- Create a method for tracking our **open** outcomes.
- Assess and refine all aspects.



Attribution - NonCommercial - Share Alike + CC

+ Commercial with reciprocity

Green Map is not a Start Up -- we are a “Start Open”

Climate: prioritize, promote the positive, create wellbeing

Partnerships: extend the mapping & the making, sustainably

Synergy: Get the network together to explore Open’s potential

Contribute and connect: locally and globally

Evolve!





OPEN DATA WEEK 2021

Powered By
NYC OpenData

new.opengreenmap.org

Make one or several maps

Sites can be shared on multiple maps

Sites can have multiple images and sounds

Green Map Icons and custom icon sets can be mixed on your Green Map

4 level Team management

export - import - embed

Open Street Map (with Stamen's Toner and Terrain). Add your base map, too

Yes, it's open source and free for non-commercial use

Webapp for all devices

Maps



Creative Community Cases LES
Parsons DESIS (Design for Social Innovation and Sustainability) Lab is a research laboratory created in 2009 at The New School in New York City. DESIS Lab works at the intersection of strategic and se...



NYC Energy
Featuring climate smart energy choices and energy efficiency projects all across NYC! We were inspired to map energy in NYC by the Great Northeast Blackout of 2003, and published our first map on t...



4BsHive Bristol: green map of Knowle West
GreenBristol mixes creativity with new media to produce events, performances, processes and products that engage a wide audience with local and global environmental issues. Statement of Purpose Green ...



Harta Verde Timișoara
Asociația Harta Verde România is a non-profit, non-governmental organisation working to achieve a sustainable society through biodiversity conservation, promoting ecotourism, formal and non-formal edu...

Icons



Green Map Icons
Welcome! Green Map Icons, version 3 are available for mapping and more - all to help you and your community thrive and become a healthier and more sustainable place! Now available under the Creative C...



SDGs - the Sustainable Development Goals
The United Nations has created 17 SDGs - the Sustainable Development Goals. See them below and use them on this platform to to chart the signs of progress toward the SDGs in your town.



Recovery Icons by Green Map
Recovery Icons, designed to be used as people start returning to public life in the Covid era, point out places where you can distance safely, enjoy nature nearby, support local business and help guid...

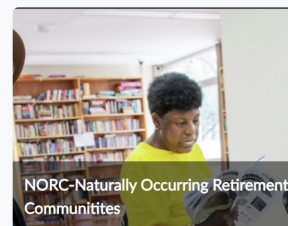


Refill
Refill Icon

Sites



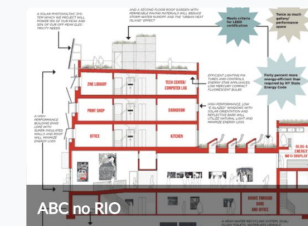
Homesteading-UHAB
Sweat equity Homesteading- Work on housing find one particular case in the LES: we should contact Margarita Lopez (case study) Look also: Housing co-ops in existence - Identify buildings (city



NORC-Naturally Occurring Retirement Communities
As people get older together incorporating mutual peoples housing association (NORC program) - find one particular case in the LES [ALSO UNDER CARE] Henry Street Settlement's NORC



4th St. Food Co-Op
A healthy mostly organic and local bulk dry goods/organic products shop. Anyone can shop here and the coop offer discounts to members (depends on



ABC no RIO
ABC No Rio is a collectively-run center for art and activism. We are known internationally as a venue for oppositional culture. ABC No Rio was founded in 1980 by artists committed to

Adding Icon sets - UN SDGs & our 2020 Recovery Icons



Browse Contribute ▾ Manage ▾ Help



To help communities recover resiliently, use this set on local maps, apps, signs, art, social media, OGM2, & more

GreenMap.org/recoveryicons

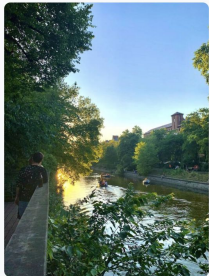
#RecoveryIcons

	RECOVERY ICONS					
PUBLIC HEALTH	Testing Station	Critical Supplies	Hospital	Wellness Resource / Alternative Health	Unhealthy Spot / Quarantine	Wash Hands Here
	Farmers Market / Local Market	Community Farm / Coop Garden	Food Gathering Site	Farm with Animals		
	Social Service	Food Bank / Emergency Food	Translator / Interpreter	Temporary Housing	Refugee Area / Refugee Safe Space	
REGENERATION	Physical Distance Design	Mask Up - Crowded Place	Bicycle Site	Wheelchair Accessible	Pedestrianized Street	Free Speech Zone / Communication Station
	Community Garden	Public Space / Square	Bird and Wildlife Watching	Park - Open Space - Eco Active Area	Cool Spot	
	Lively Spot	Culture without Crowding	Outdoor Dining	Volunteer Site / Coordinator	Eco-spiritual Site	Traditional / Indigenous Culture
REGENERATION	Local Business	Resilience Training / Development	Employment / Business Support	Social Enterprise / Co-op	Green Technology / Green New Deal Site	
	Mutual Aid	Recovery Superhero	Community Collaboration	Eco-Justice Organization	Memorial / Site of Conscious	
	Public Restroom	Wifi Spot	Public Charging Station			

GreenMap.org/recoveryicons

Uses:
 Map +
 Data collection
 Planning and advocacy
 Engagement in sustainability,
 place-based learning, etc
 Technology mastery
 Researching best practices
 Story-sharing
 Sites poster (Snagit) →
 Quick insights (campaigns)

Campaigns



Mapping Berlin Soundscapes



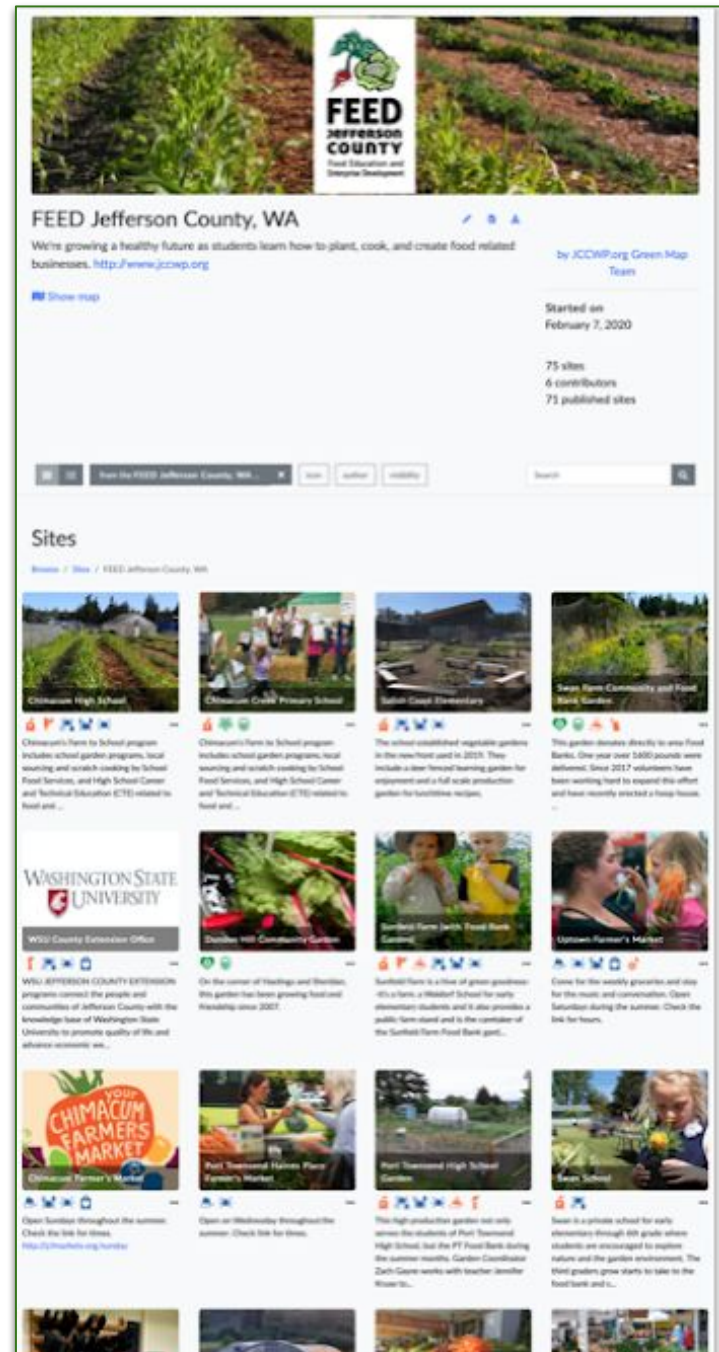
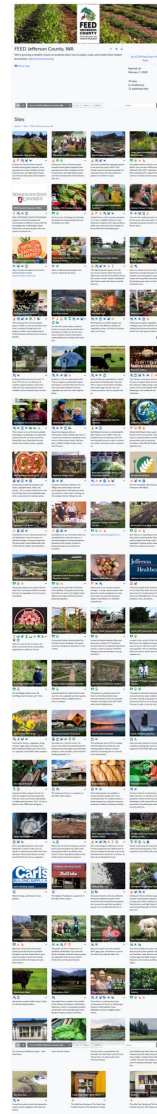
Tree Love on NYC's Lower East Side

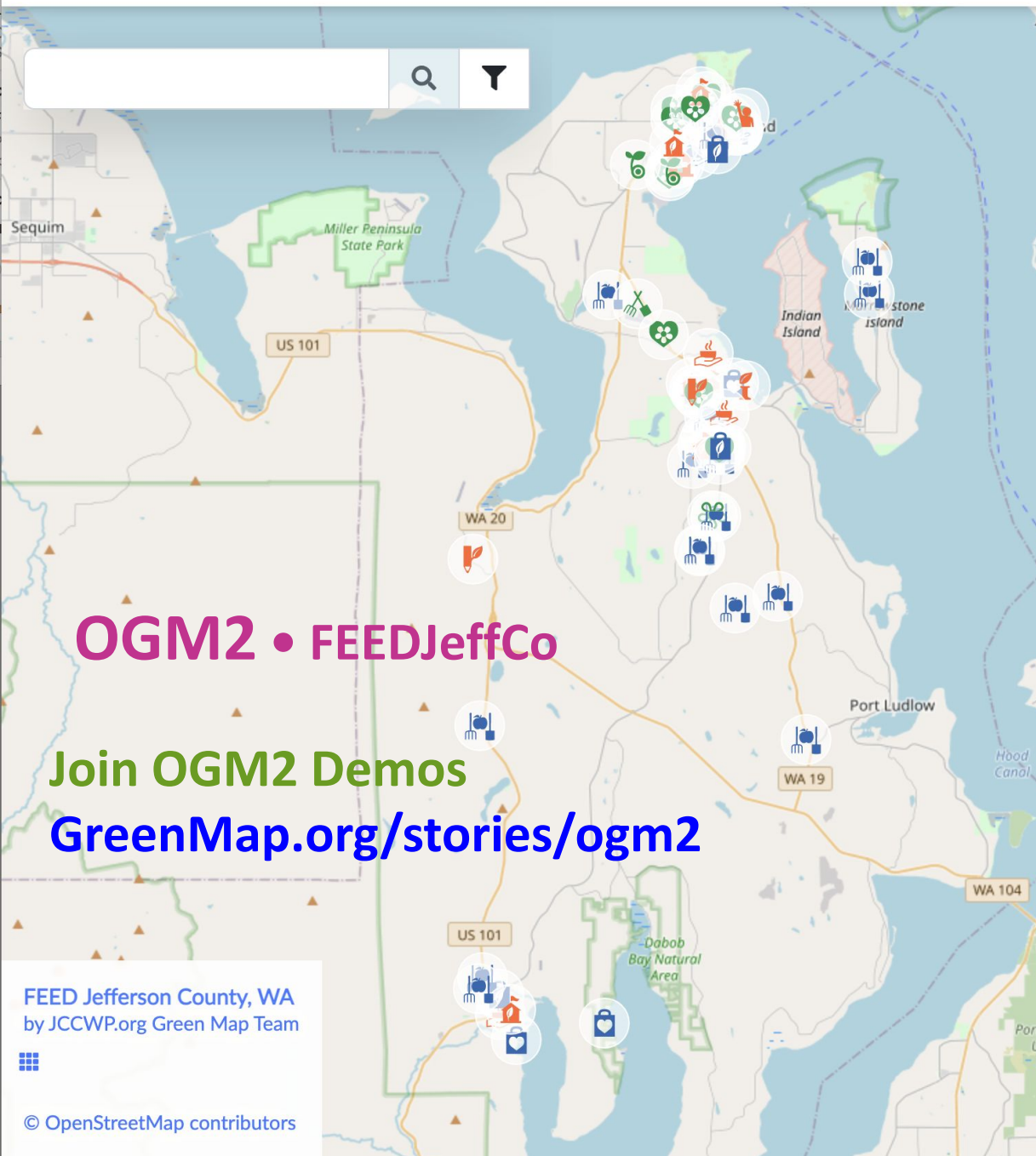


Îlots de fraîcheur à Mons



תי הספר בחדרה create a green map
בני יוצרים מפה ירוקה





OGM2 • FEEDJeffCo

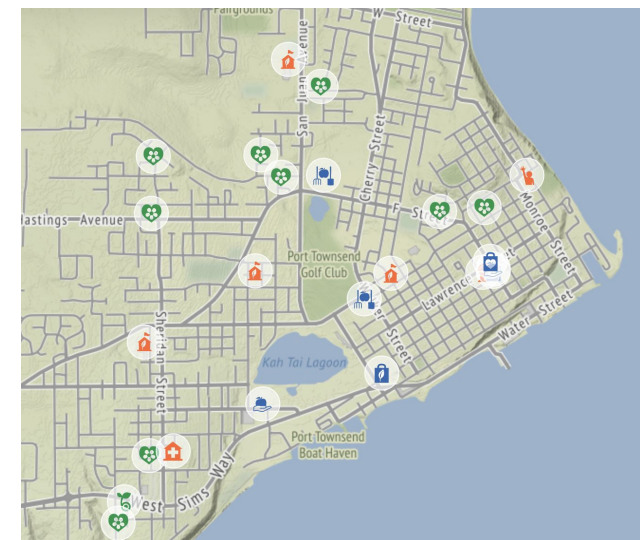
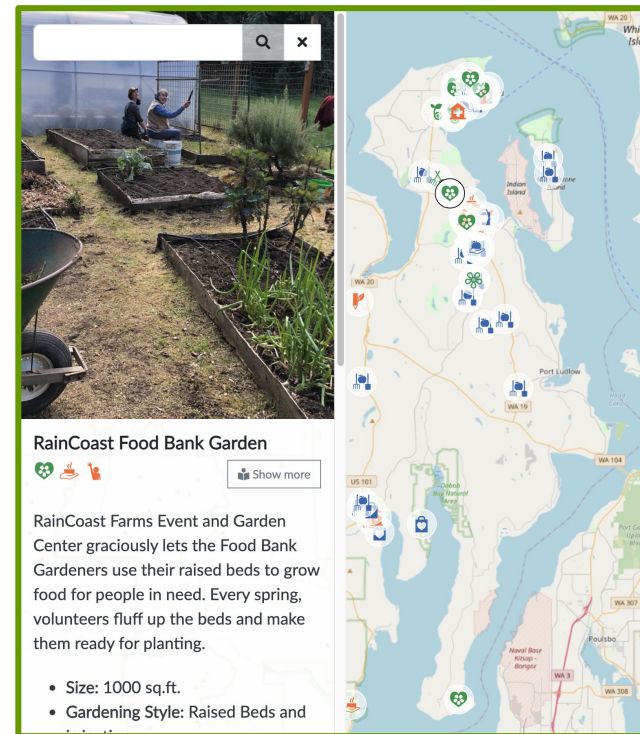
Join OGM2 Demos

GreenMap.org/stories/ogm2

FEED Jefferson County, WA
by JCCWP.org Green Map Team

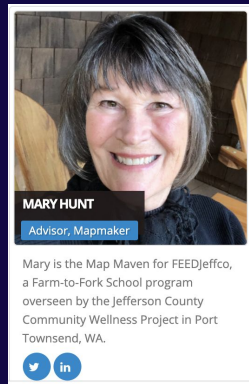


© OpenStreetMap contributors



Next Speaker:

Mary Hunt



new.opengreenmap.org

